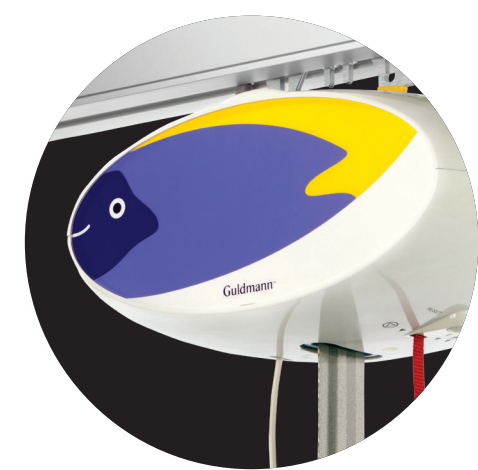
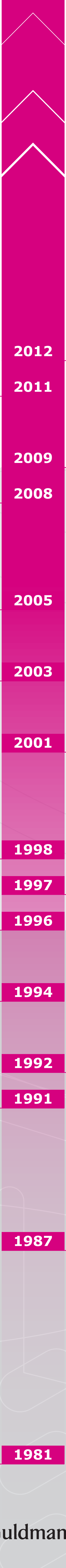


The evolution of Guldmann Hoists

A history of innovation



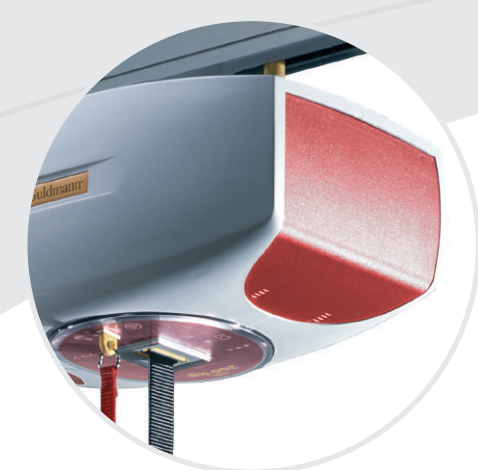
GH1
Simple lifting module based on GH3 technology, but specified and designed for use in environments with less intensive use, such as in home care environments, sheltered housing and care homes. GH1 systems can be easily adjusted to fit the surrounding environment via the interchangeable side panels on the lifting module and rails.
Power supply: 36 V DC, 1 x 24 V NiMH 2.8 Ah. The hand control can be charged via a charging station.
Lifting capacity: 205 kg



GH2 Twin
Connected and synchronised GH2 HD lifting modules.
Lifting capacity: 500 kg



GH2 F / GH2 F HD
Portable lifting module with all the advantages of a fixed lifting module. Like GH2, but with a unique function that allows the module to be automatically installed and deinstalled in the rail system.
Power supply: 24 V DC, 2 x 12 V 4 Ah lead-acid batteries. Power supply via hand control.
Lifting capacity: 200/250 kg
Patents:
Quick coupling: P15158DK00, P15158AUPC, P15158USPC, P15158EPPC
Portable lifting module: P14434DK00, P14434AUPC, P14434FRER, P14434NLEP, P14434ITEP, P14434GBEP, P14434SEEP, P14434DEEP, P14434USPC



GH2 HD
As GH2
Lifting capacity: 250 kg

DH 4000
Connected and synchronised DH 2000 lifting modules. The double lifting strap makes this model ideal for even lifting and for lifting heavy and/or larger individuals. For even lifting operations, the straps can be mutually adjusted to move patients into e.g. the Trendelenburg position.
Power supply: 24 V DC, 2 x 12 V 4 Ah lead-acid batteries.
Lifting capacity: 455 kg



DH2000
Fourth generation lifting module. New standards for design and user-friendliness. Stronger, faster and even more reliable with electronic monitoring of the hoist's functions, as well as with a new aluminium and plastic design.
Power supply: 24 V DC, 2 x 12 V 4 Ah lead-acid batteries.
Lifting capacity: 235 kg
Patents:
Lifting module w. power switch: P9981DK00, P9981DEDK

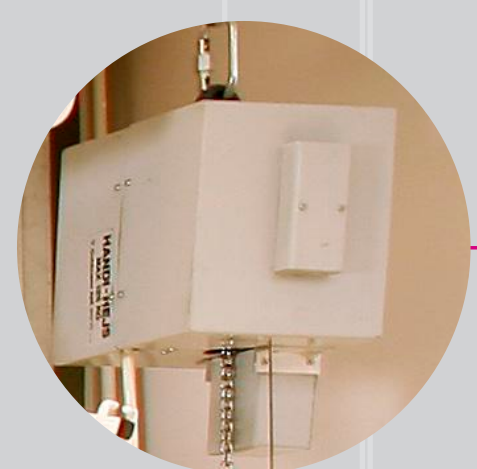


DH3
Third generation lifting module. 17% stronger, 29% faster and with an even better design featuring an emergency stop button, electric emergency lowering device, full monitoring of the strap and an automatic on/off function. The batteries are electronically monitored. The DH3 comes with a new lifting hanger that sets new standards for user-friendliness and safety.
Power supply: 24 V DC, 2 x 12 V 7.2 Ah lead-acid batteries that are charged via a charging station that can be installed throughout the rail system. More than one charging station can be installed in the same system.
Lifting capacity: 175 kg
Lifts per charge: 100



DH2
Second generation lifting module that sets new standards for both user-friendliness and design. Despite its significantly smaller volume, the DH2 is available with built-in horizontal motors and infrared remote control. A sensor monitors the lifting function in connection with upright lifting and to ensure the strap does not become twisted. The control has been modified from a relay control to microprocessor control. This model comes with an emergency lowering device and on/off function on the hand control, as well as with automatic overload protection.
Power supply: 24 V DC, 2 x 12 V 7.2 Ah lead-acid batteries that are charged in the charging station at the end of the rail system.
Lifting capacity: 150 kg
Lifts per charge: 40-50

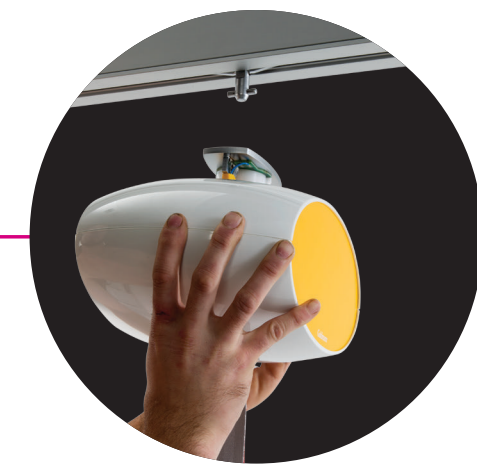
Handi Hoist
The first Danish-produced ceiling-mounted hoist – in reality, it's a redesigned industrial hoist with a lifting chain and a mechanical emergency lowering device. Fitted in industrial rails made of steel.
Power supply: cable-based 360 V and 3 x 42 V directly to the hoist.
Lifting capacity: 125 kg



GH1 F
A portable lifting module with the advantages of a fixed lifting module. Like GH1, but with a unique function that allows the module to be automatically installed and deinstalled in the rail system.
Lifting capacity: 200/255kg



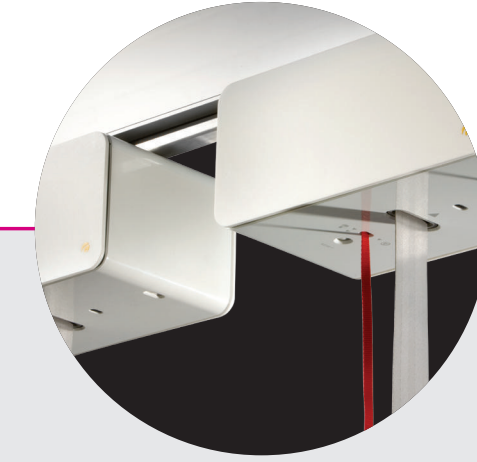
GH1 Q
Like GH1, but with the option of mounting and dismounting in rail systems via a quick-release connection.
Lifting capacity: up to 205 kg



GH3
Sixth generation lifting module specified and designed for use in professional environments. Award-winning system design that is tailored to meet today's demands for process optimisations and contemporary architecture. Increased processing speeds, regardless of load. Launched in combination with an all new rail system. Software controlled by and equipped with a data log and service counter.
Power supply: 33 V AC, 1 x 24 V NiMH 2.8 Ah battery.
Lifting capacity: up to 255 kg
Patents: *Rail profile for lifting module:* P17225DK00, P17225CNPC, P17225USPC, P17225EPPC
Hanger mounting for lifting module: P17227DK00, P17227CNPC, P17227USPC, P17227EPPC
Hand control for lifting module: P17226DK00, P17226CNPC, P17226USPC, P17226EPPC
Standard approval: UL60601 for the complete system, in addition to third-party approval in accordance with EN10535



GH3+
The intelligent lifting module. Developed on the GH3 platform, but with an even higher processing speed and capacity, as well as with numerous options for adjusting to individual needs. Use patterns can be collected and read via the CLM module, thus allowing for the continuous monitoring of operations. The hand control features a display for the immediate read-out of use data. Available with built-in scale unit.
Power supply: depends on lifting capacity, 33 V AC, 1 x 24 V NiMH 2.8 Ah battery or 2 x 24 V NiMH 5.6 Ah
Lifting capacity: up to 350 kg



GH3 Twin
Connected and synchronised GH3+ lifting modules.
Lifting capacity: 500 kg

2012

2011

2009

2008

2005

2003

2001

1998

1997

1996

1994

1992

1991

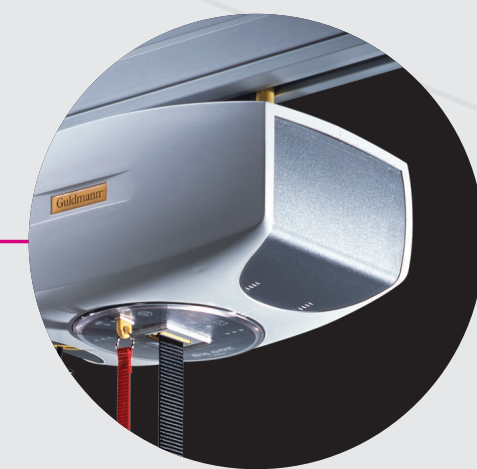
1987

1981

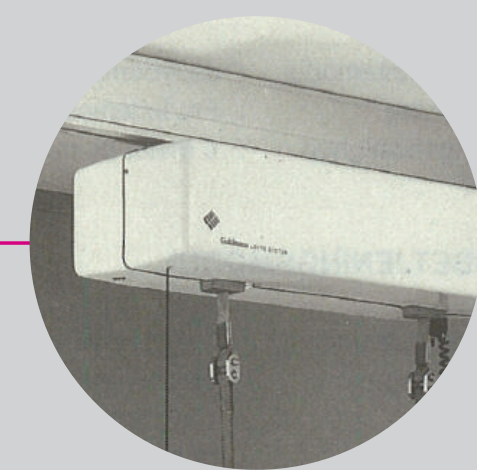
DH1000
Compact and sturdy portable/mobile ceiling-mounted hoist based on DH2000 technology.
Equipment weight: 11.5 kg
Power supply: 24 V DC, 2 x 12 V 2.9 Ah lead-acid batteries.
Lifting capacity: 175 kg



GH2
Fifth generation lifting module. Iconic design, 14% stronger, 15% faster and much smaller. Microprocessor-controlled with built-in data log and diagnostic system, as well as with adaptable parameters.
Power supply: 24V AC or DC, 2 x 12 V 4 Ah lead-acid batteries that are charged via built-in charger. Power supply via power rails throughout the rail system.
Lifting capacity: 200 kg
Patents:
Lifting module with dual/variable speed as well as planet gear: P9982DK00, P9982GBEP, P9982SEEP, P9982DEEP, P9982USPC
Drive motor: P14060DK00, P14060GBDK
Combi-Lock: P14510DK00, P14510FREP, P14510NLEP, P14510HKEP, P14510ITEP, P14510GBEP, P14510SEEP, P14510DEEP, P14510USPC
Standard approvals: first complete UL 60601 approval of a lift system on the market, in addition to third-party approval in accordance with EN10535.



Maxi Hoist
Lifting module based on DH2 technology with synchronised double strap that is ideal for lifting patients in lying position, or for lifting and handling very large individuals.
Power supply: 24 V DC, 2 x 12 V 7.2 Ah lead-acid batteries
Lifting capacity: 150 kg



Mini Hoist
Compact and portable/mobile ceiling-mounted hoist based on DH2 technology. The side hand grips function as suspension pieces for the sling straps.
Equipment weight: 7.8 kg
Power supply: 24 V DC, 2 x 12 V 2.9 Ah lead-acid batteries that are charged using the accompanying charger.
Lifting capacity: 125 kg
Lifts per charge: 25-30



DH1
Guldmann's first ever developed and manufactured lifting module. Among this model's unique functions are: a hand control with built-in battery indicator, lifting strap instead of a chain, the option for adding a horizontal motor, and a design that is well suited for private homes. Mounted in a newly developed aluminium rail system.
Power supply: 24 V DC, 2 x 12 V 7.2 Ah lead-acid batteries. First ever lift with internal batteries that are charged in a charging station at the end of the rail system.
Lifting capacity: 150 kg
Lifts per charge: 20-25

