

Ropox Backrest

MOUNTING INSTRUCTIONS

Keep these instructions with the product at all times

These Mounting Instructions comprise:

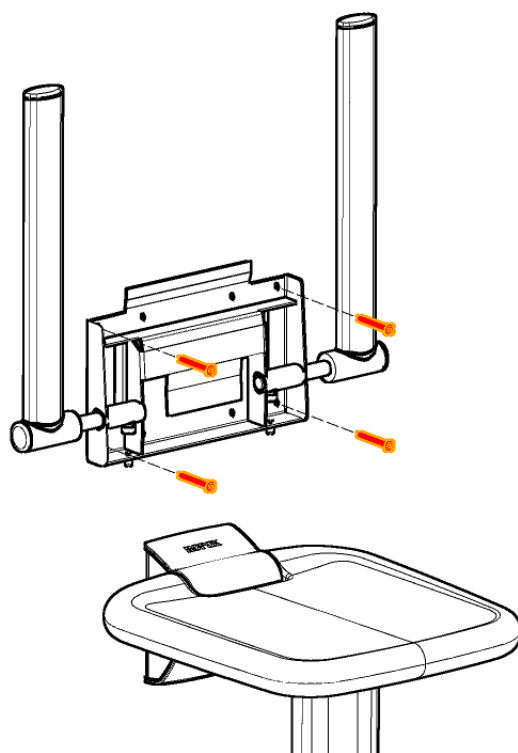
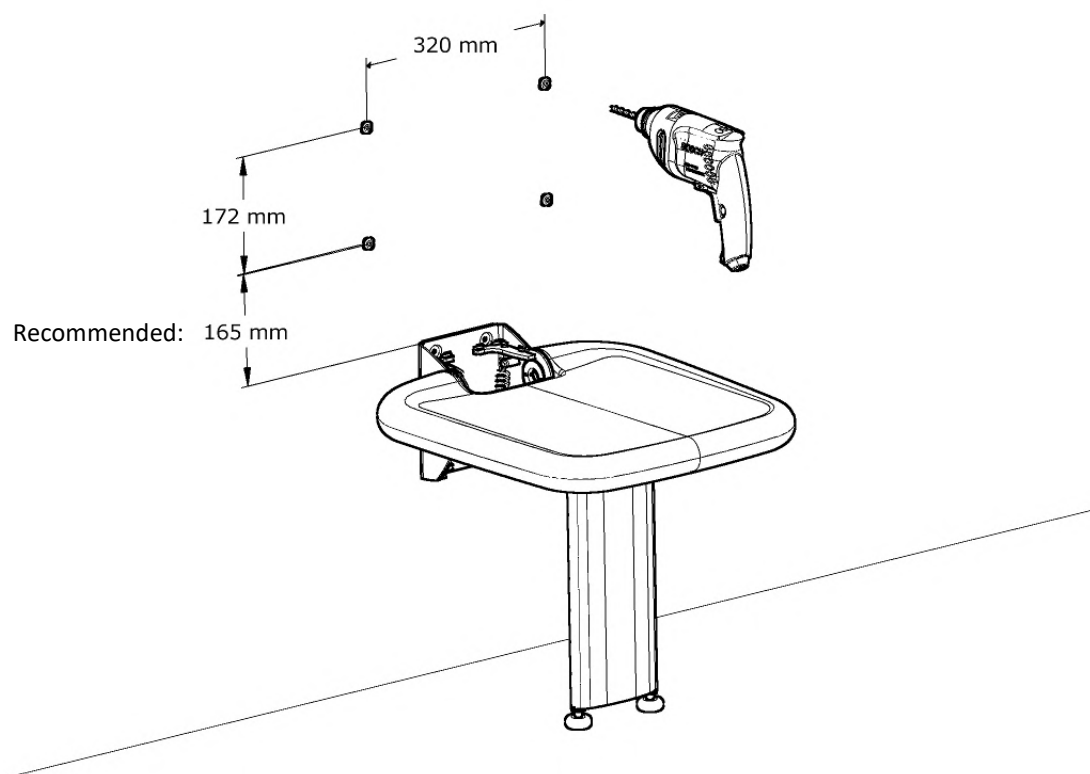
Backrest
with/without armrests

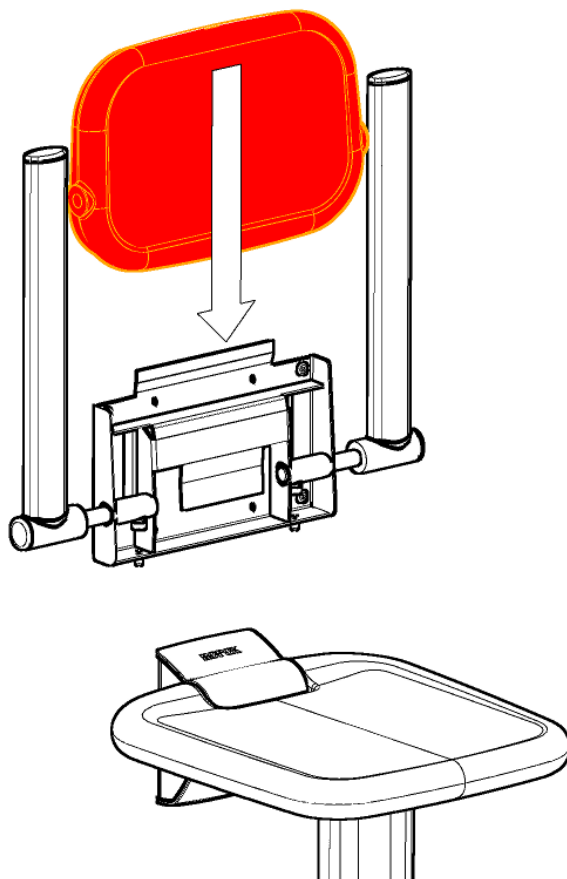
x1

Mounting screws
Rawlplugs

x4

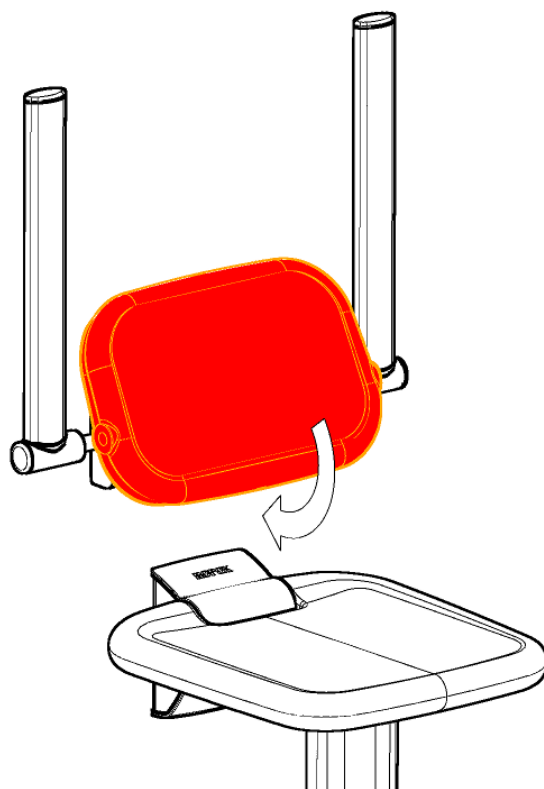
x4



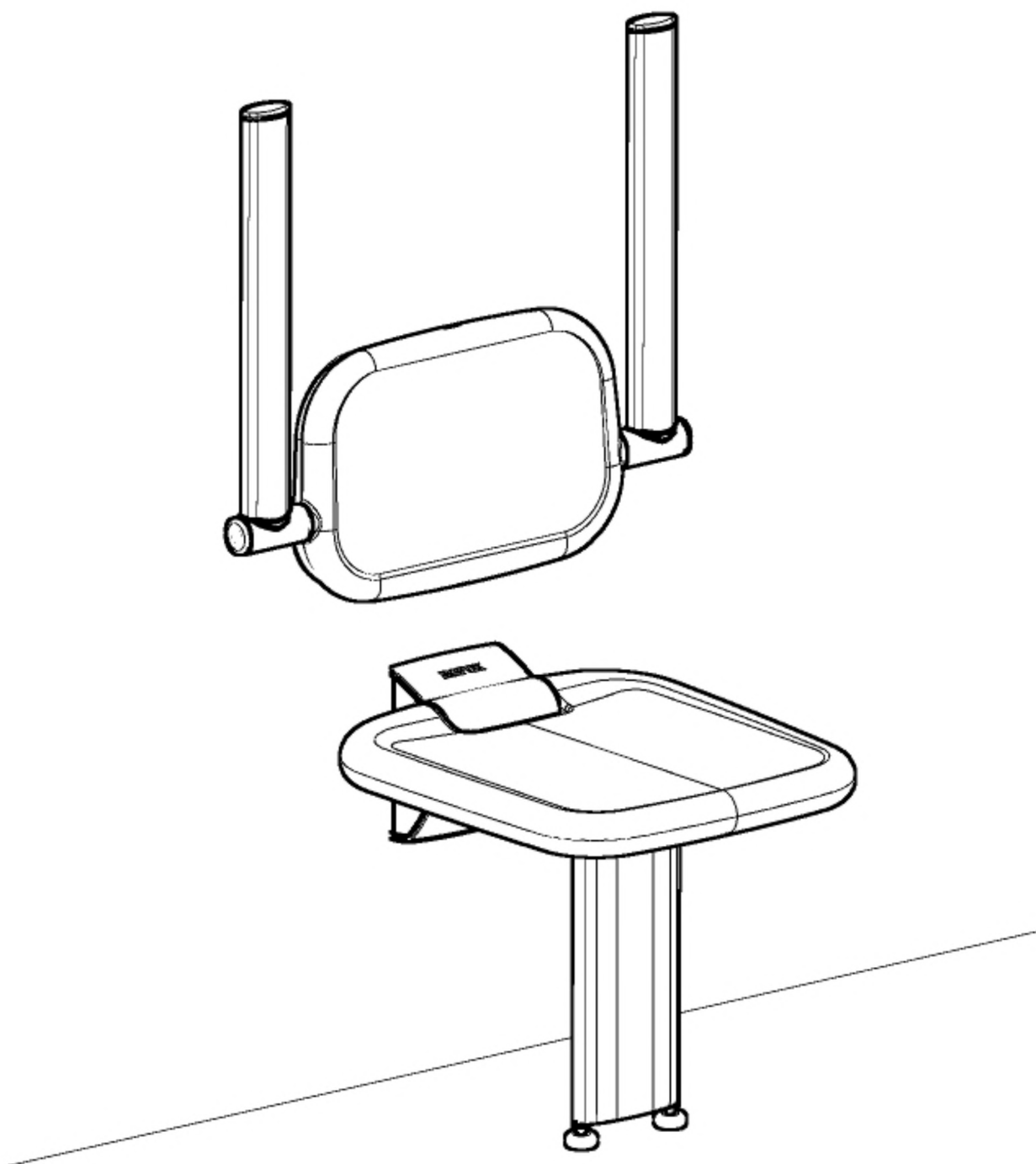


3

**Please note: Mount only the PUR backrest under tempered conditions.
At 10 C° or lower the backrest surface could crack during mounting.**



4



Distributor

EVOCARE AUSTRALIA PTY LIMITED

A.B.N. 98 078 566 604

Trading as **EVOCARE** and **L&M EQUIPMENT**

P.O. Box 145, Everton Park Qld. 4053

Ph: 07 3355 8000

Website: <http://www.evocare.com.au>

Email: sales@evocare.com.au

workshop@evocare.com.au

warehouse@evocare.com.au

accounts@evocare.com.au



5