

OWNER'S MANUAL



Aluminium Walkers—LM3206 & LM3208



Product Codes:

LM3206 Aluminium Walker, 150mm (6") Castor, curved fold up backrest, 54cm seat height, security bag, ball end brake handle, in-line brakes.

LM3208 Aluminium Walker, 200mm (8") Castor, curved fold up backrest, 55cm seat height, security bag, ball end brake handle, in-line brakes.

LM3206BM	6" Blue Metallic
LM3206BU	6" Burgundy Metallic
LM3206CM	6" Copper Metallic
LM3206PU	6" Purple Metallic
LM3206SM	6" Silver Metallic

LM3208BM	8" Blue Metallic
LM3208BU	8" Burgundy Metallic
LM3208CM	8" Copper Metallic
LM3208PU	8" Purple Metallic
LM3208SM	8" Silver Metallic

WE ARE HERE TO HELP YOU

To request product service and order replacement parts, please call:

Customer Service: 07 3355 8000

Spare Parts: 07 3355 8007

8.30 am to 5.00 pm Monday to Friday

Email: sales@evocare.com.au

**If the product does not function properly contact
Evocare Australia.**

When requesting service, please provide the following information:

1. Part Code and Description
2. Date of Purchase

Address: Evocare Australia Pty Limited
260 South Pine Road, Enoggera, Qld. 4051
P.O. Box 1144, Stafford, Qld. 4053

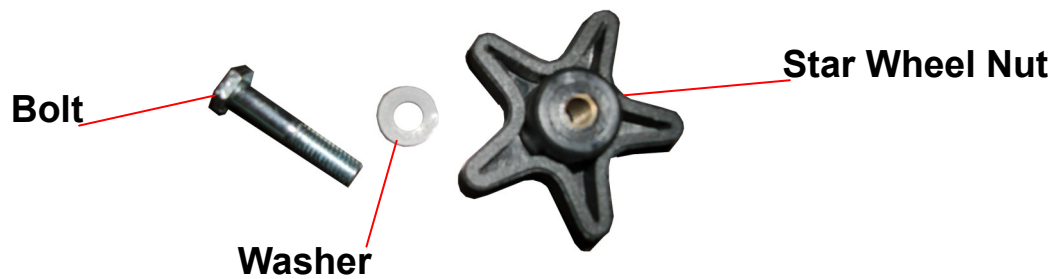
DESCRIPTION



Note: Maximum user weight for this product is 120kg

Evocare is a quality endorsed company and supplies equipment listed with the Therapeutic Goods Administration.
The ARTG number for the Walkers is 179500

ASSEMBLY

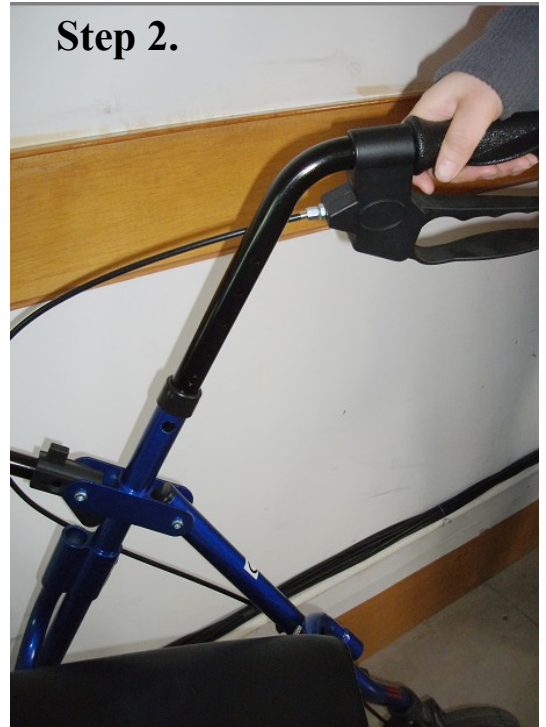


ASSEMBLY CONT.

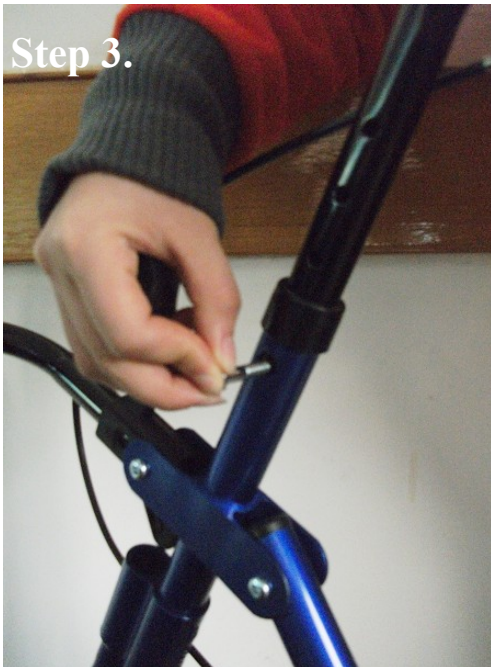
Step 1 : Remove all Plastic—Open Walker by spreading the wheels apart and lowering the seat. Remove Star Wheel nut and washers.

Step 2 : Insert handles into the tubes on the sides of the walker.

Step 2.



Step 3.



Step 3 : Align holes of the handle and the tube. Place Bolt through the hole at the desired handle height.

Please ensure the Bolt head fits securely within the frame hole provided.

Step 4 : Place Washer on bolt end then tighten the Star Wheel nut on. To get required height: Stand in front of walker with arms by your side, the handgrips should be level with your wrist.

Step 4.

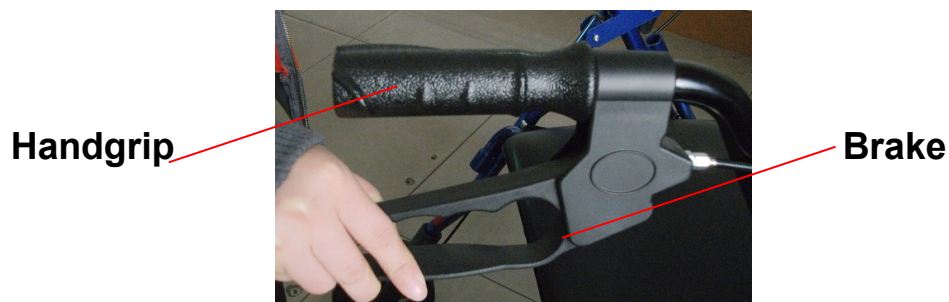


ASSEMBLY CONT.

Step 5.



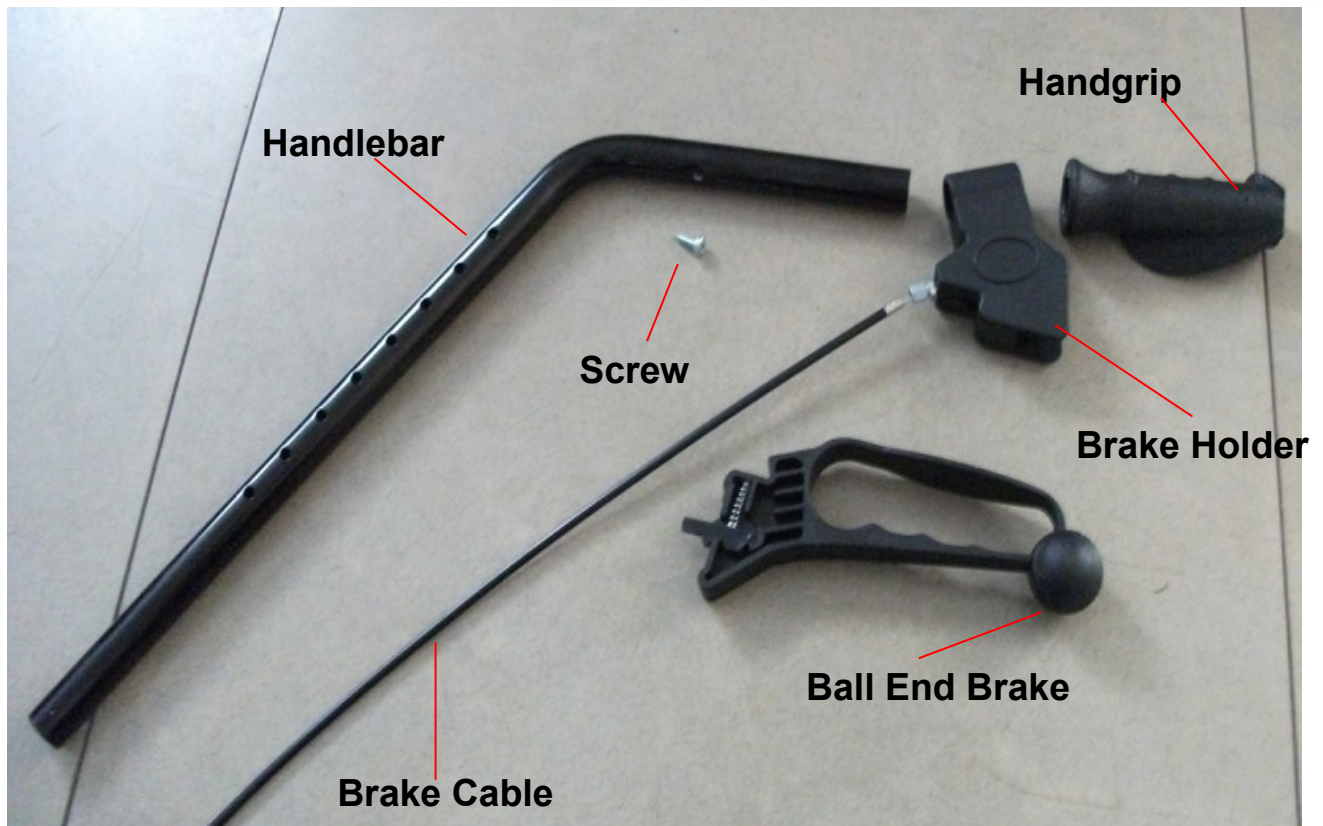
Step 5: Place the padded backrest into the brackets on the frame at the rear of the seat. Press buttons and click into place.



To operate brakes on walker: lock brakes on by placing hands in levers under handgrips and then pushing down. This is recommended for your safety when sitting on your walker. Once you have stood up, you then release brakes by pulling in an upward motion.

DO NOT release brakes until you are in a standing position.

ASSEMBLY CONT.



1. Place brake holder into handlebar and tighten the screw



2. Place brake cable onto the ball end brake via brake holder

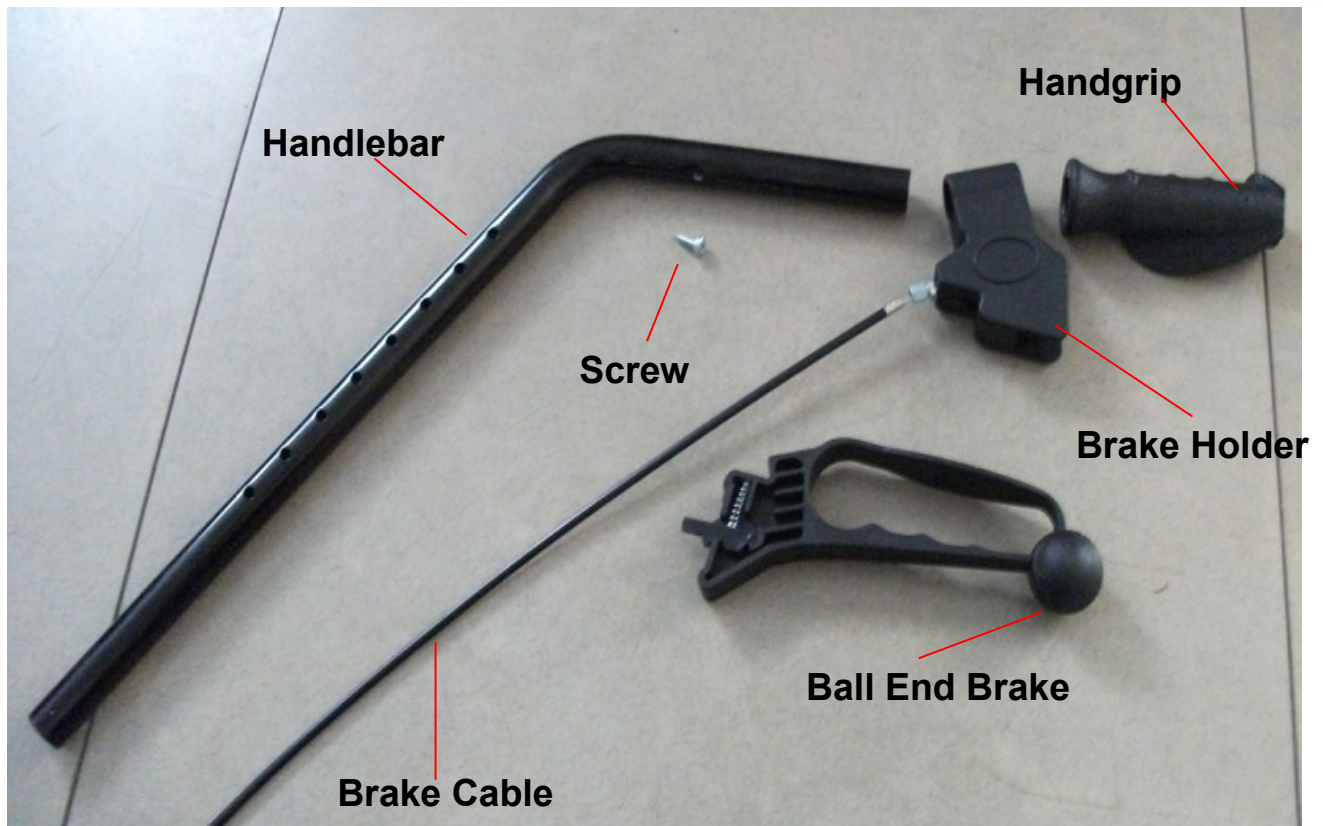


3. Place ball end brake onto brake holder



4. Install handgrip onto handlebar

ASSEMBLY CONT.



To un-Install:
Reverse the procedures.

- 1. Take out the hand grip**
- 2. Separate the ball end brake and brake holder**
- 3. Un-install the brake cable**
- 4. Screw out the bolt.**

SAFETY

Safety and handling of the seat walker requires the close attention of the user. This manual points out the most common procedures and techniques involved in the safe operation and maintenance of the seat walker. It is important to practice and master these safe techniques until you are comfortable in manoeuvring around frequently encountered architectural barriers.

Use this information only as a basic guide. The techniques that are discussed below have been used successfully by many. Individual seat walker users often develop skills to deal with daily living activities that may differ from those described here. All warnings and cautions given in this manual **MUST** be followed.

Techniques in this manual are a starting point for the new seat walker user with safety as the most important consideration for all.

To determine and establish your particular safety limits, practice bending, reaching and sitting in several combinations in the presence of a qualified health professional before attempting active use of the seat walker.

When unfolding your seat walker for use make sure it is fixed safely by pushing down on the folding brackets between the front and rear frame.

Also ensure that the backrest has been pushed back to its locked position.

When assembling your seat walker, make sure that bolts and tightening wheel are secure **BEFORE** use.

Always check hand grips for looseness before using seat walker. If loose and/or worn, replace immediately.

If seat walker is exposed to extreme temperature (above 38° C or below 0° C), high humidity and/or becomes wet, prior to use, ensure hand grips **DO NOT** twist on the seat walker handle—otherwise damage or injury may occur.

When seated **DO NOT** attempt to reach for objects if you have to move forward on the seat or if you have to pick them up from the floor by reaching between your knees. **DO NOT** reach over the backrest to reach objects behind you as this may cause the seat walker to tip over.

DO NOT use on roads, streets or highways.

DO NOT climb, go up or down an incline or traverse slopes greater than 9 degrees.

DO NOT attempt to go up or down an incline which has a film of water, ice or oil.

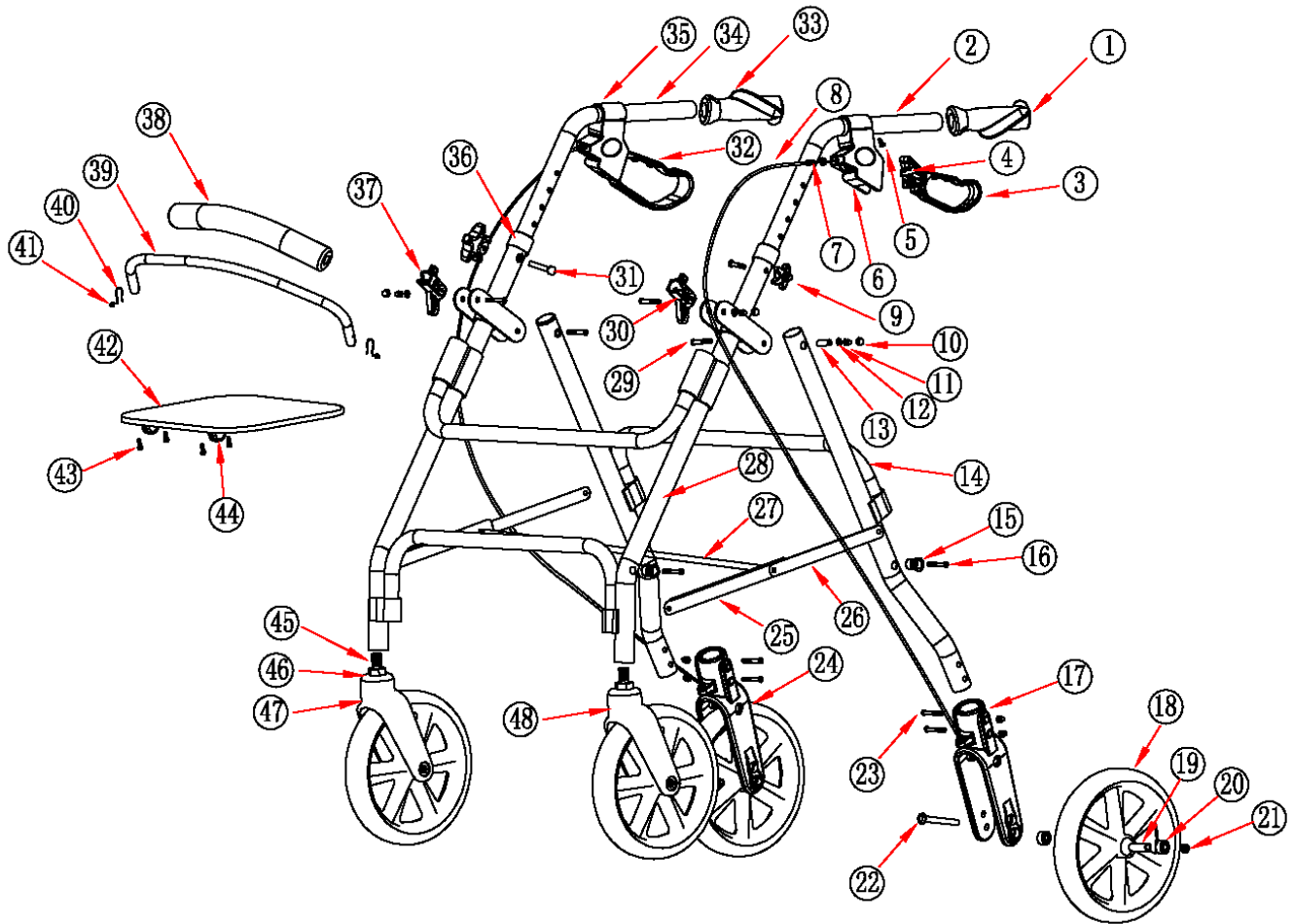
Use caution when traversing curbs or obstacles as this may cause the seat walker to tip over and cause bodily harm or damage to the seat walker.

ALWAYS apply brakes before sitting on the seat. **DO NOT** release brakes until you are in a standing position.

The seat walker is not a wheelchair. People must not be pushed while seated on the walker—otherwise damage or injury may occur and it will also void the warranty.

The tyres and wheels need to be checked periodically for cracks and wear. If problems are indicated, the problem parts should be identified and replaced immediately. Should brakes need adjusting, consult your local supplier or Evocare Australia.

PART LIST



LM3206 Folding Four Wheel Walker, Adjustable height anatomical hand grips, brakes, folding backrest, 6" wheels and Security bag under seat.

10	Z02A01	Nylon nut cover	48	M01LA802L	Front fork 8" walker left
17	B02LA803	Rear fork	47	M01LA802R	Front fork 8" walker right
18	AZ01LA803	Castors 8" walker	48	M01LA601L	Front fork 6" walker left
18	AZ01LA601	Castors 6" walker	47	M01LA601R	Front fork 6" walker right
19	X03LA8038	Bushing 8 inch		BZ01LA803	Front fork bearing cover
19	X03LA8036	Bushing 6 inch			
20	D0003C01	Bearing			
30	AU01LA808L	Backrest holder left			
32	K01LA802R	Hand brake assembly right			
37	AU01LA808R	Backrest holder right			
39	C01LA808	Backrest			
41	L01LA809	Copper screw			
42	G01LA601	Seat			

PART LIST

PARTS LIST FOR WALKERS



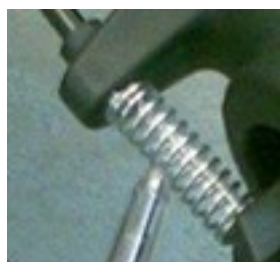
Brake Gear Plate
A01LA803



Arc Washer
H01LA802



Nut for Cable
H01LA802C



Brake Spring
Y01LA803



Nylon Nut
Z02A01



Backrest Holder
AU01LA808L—left
AU01LA808R—right



Copper Screw
L01LA809



Seat Retainer
E01LA802

DIMENSIONS, CLEANING & MAINTENANCE

Measurements for Walkers					
Model	Overall Width (mm)	Folded Width (mm)	Between Arms (mm)	Rear Wheel dia. (mm)	Front Wheel dia. (mm)
LM3206	620	230	450	150	150
LM3208	620	240	450	200	200
Model	Seat Height (mm)	Overall Length (mm)	Height to Grips (mm)	Seat Width (mm)	Seat Depth (mm)
LM3206	540	630	790-950	350	330
LM3208	550	670	830-990	350	330
Model	Backrest Height (mm)	SWL (kg)	Gross Weight (kg)	Net Weight (kg)	
LM3206	250	120	8.6	7.2	
LM3208	250	120	9.7	8	

CLEANING & MAINTENANCE

Regular cleaning and inspection is recommended.

Ensure the walking frame is kept clean.

Wipe down the walking frame with a damp cloth on a regular basis.

WARRANTY

1. Evocare provides consumers with the following warranty in relation to this Product, in addition to complying with the requirements of any relevant legislation, including the *Competition and Consumer Act 2010* (Cth) in Australia and the *Consumer Guarantees Act 1993* in New Zealand (the Acts), except where a New Zealand consumer acquires the Product for the purposes of a business.
2. In this warranty, we have used the following definitions:
 - (a) **Form** means a warranty claim form issued by Evocare in respect of Products;
 - (b) **Evocare or our** means Evocare Australia Pty Limited, ABN 98 078 566 604 of Level 19, 144 Edward Street, Brisbane 4000;
 - (c) **Products** means the goods manufactured for Evocare (including products manufactured by its contract manufacturers);
 - (d) **Material** means a material or component used by Evocare in the manufacture of the Products;
 - (e) **Retailer** means the authorised dealer of Products from whom the Product was purchased;
 - (f) **Warranty Period** means the warranty period commencing from the date of purchase of the relevant Product. If the Product or part (as the case may be) is repaired or replaced, there will be no extension to the original warranty period; and
 - (g) **Workmanship** means the handling, assembly and manufacturing processes performed by or on behalf of Evocare in order to manufacture the Products.
3. Evocare warrants that for the duration of the Warranty Period, all Products will be free of faults arising from defects in Workmanship or Materials, on the terms and conditions set out in this warranty.
4. Evocare undertakes that if during the Warranty Period any Product, or any part of a Product, has failed to operate correctly due to faulty Workmanship or defective Material, it will repair or replace the Product or part (as the case may be) free of charge provided that the following procedures are met :
 - (a) The consumer must contact the Retailer or Evocare upon becoming aware of any defect to a Product upon which the consumer will be required to complete a Form and provide satisfactory proof of purchase.
 - (b) Evocare will review the Form to determine whether there is a defect, and if so Evocare agrees to (at its option) repair, replace or supply equivalent goods, or pay the cost of any of those remedies to the consumer.
 - (c) If Evocare requests the return of the applicable Product or part, the consumer will be responsible for the collection and freight costs of returning that Product or part to Evocare.
 - (d) The consumer acknowledges that it is also responsible for the freight costs to deliver any new Product or replacement part to it.
5. This warranty is in addition to any non-excludable legal rights or remedies conferred on the consumer under any applicable Act and any similar laws. To the extent permitted by law, Evocare's liability for any non-excludable condition or warranty is limited to rectifying any defect at its option, as set out in paragraph 4(b).
6. Subject to the requirements of any applicable Act or legislation and to the extent permitted by law, no liability (whether expressed or implied) of any nature whatsoever, is accepted by Evocare for any consequential loss, damage or injury arising as a result of any fault in the Products.
7. This warranty does not extend to damage to Products which occurs during transit or transportation, or which is caused by any abuse, accident or improper installation, connection, use, adjustment or repair or use of goods otherwise than in accordance with instructions issued by Evocare.
8. The warranty on Products is waived if any addition or attachment to the Products do not have Evocare's approval or are not sold as Evocare products. The Products are designed to perform specific tasks under established test loads and unauthorised attachments may produce stresses for which the design is not appropriate.
9. The following applies to consumers who purchased a relevant Product in Australia:

Our goods come with guarantees that cannot be excluded under the Australian Consumer Law. You are entitled to a replacement or refund for a major failure and compensation for any other reasonably foreseeable loss or damage. You are also entitled to have the goods repaired or replaced if the goods fail to be of acceptable quality and the failure does not amount to a major failure.

WARRANTY

Your Evocare Walker is warranted to be free of defects in material and workmanship for 12 months, for the original consumer.

NOTE: This warranty does not cover device failure due to owner misuse, negligence, or normal wear and tear.

The warranty does not extend to non-durable components such as rubber accessories, brakes and grips, which are subject to normal wear and tear. Non-durable components are warranted for 3 months.

For more information about your LM3206 & LM3208 seat walkers, warranty or to order parts call 07 3355 8007.

E- mail: sales@evocare.com.au
Website www.evocare.com.au

Manufactured for:

Evocare Australia Pty Limited, 260 South Pine Road, Enoggera. QLD. 4051.

Phone: 07 3355 8000

FAX: 07 3355 5043