

Etac Clean Manual

78644B 16-10-13

etac[®]

Evocare[®]

www.evocare.com.au

Ph: 07 3355 8000 Fax: 07 3355 5043

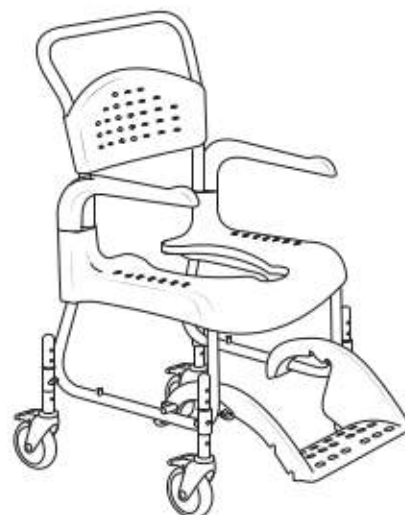
Email: sales@evocare.com.au



Clean



Clean 24"



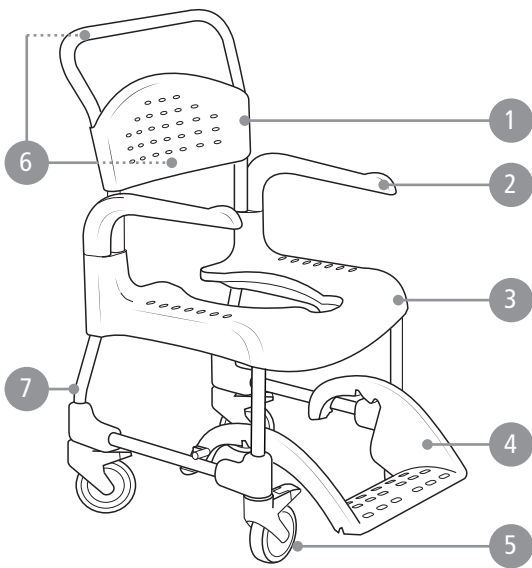
Clean HRB

CE

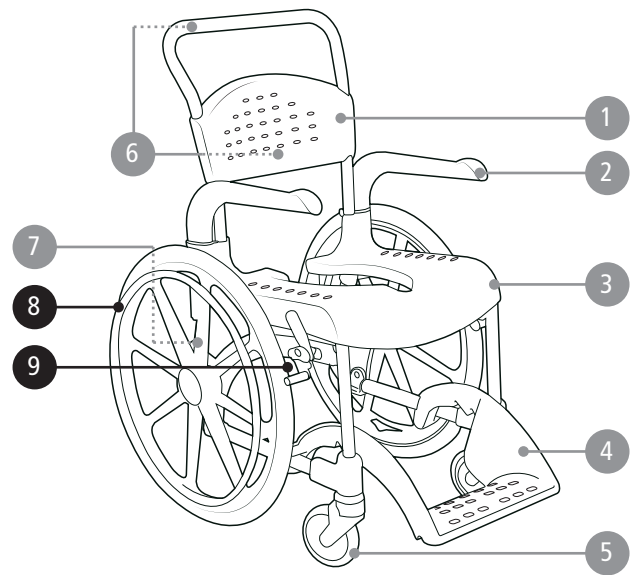
Contents

Images.....	
General.....	
Product description & dimensions table.....	
Warranty / maintenance.....	
Safety.....	
Transfers.....	
Armrest	
Height adjustment	
Footrest.....	
Backrest upholstery	
User brake	
Accessories.....	

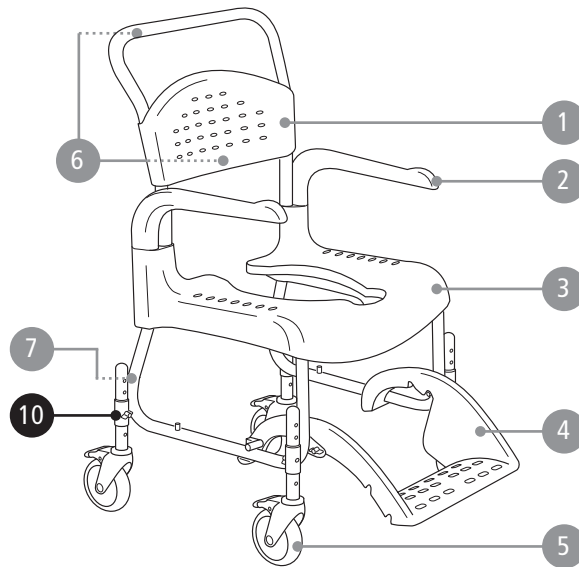
A



Clean



Clean 24"



Clean HRB

A

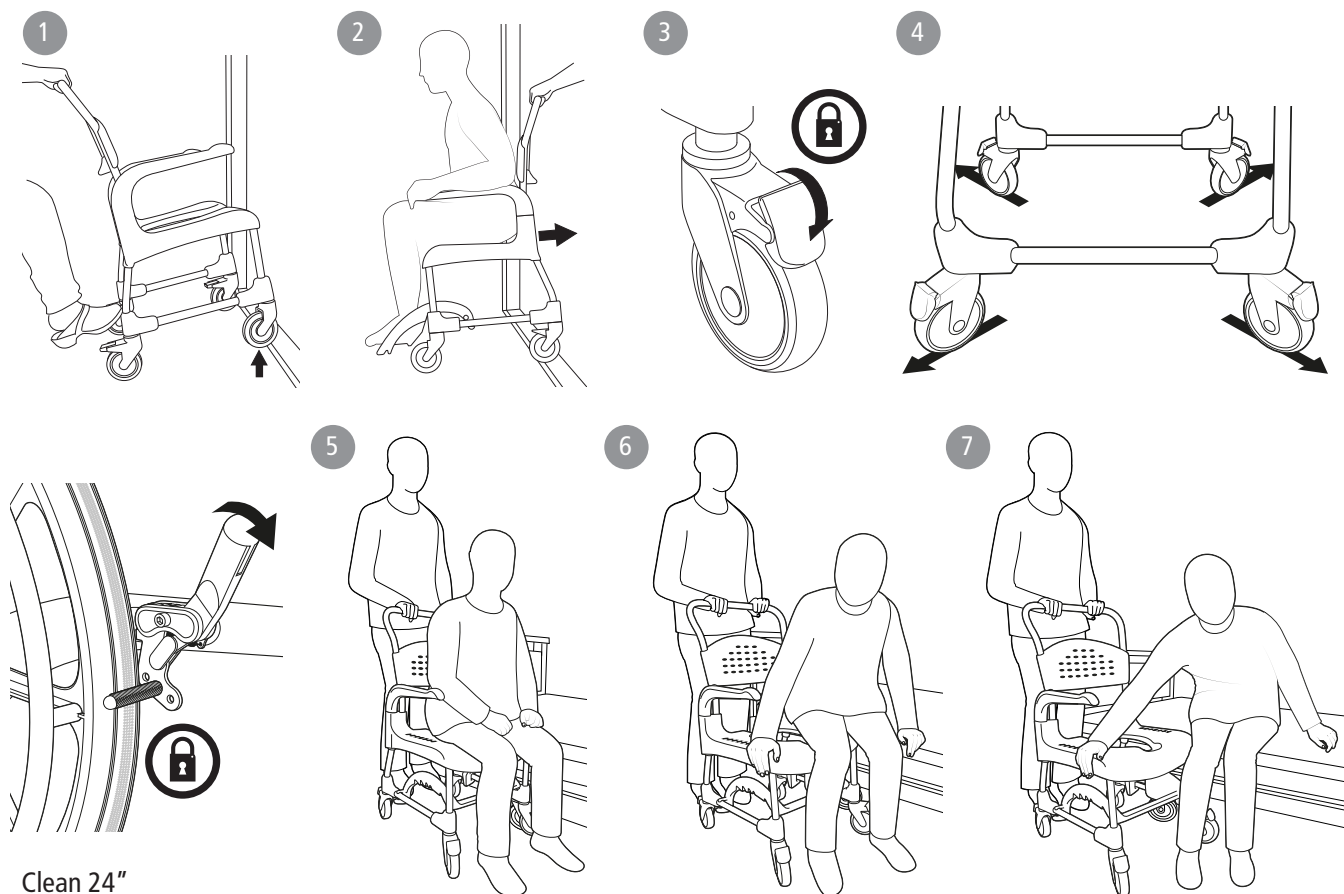
Clean 44	52 cm (20½")	56,5 cm (22¼")	98 cm (38½")	38,5* cm (15¼")	44 cm (17¼")	33 / 41 cm (13 / 16")	22 cm (8½")
Clean 49	52 cm (20½")	56,5 cm (22¼")	103 cm (40½")	43,5* cm (17")	49 cm (19¼")	33 / 41 cm (13 / 16")	22 cm (8½")
Clean 55	52 cm (20½")	56,5 cm (22¼")	107 cm (42")	49,5* cm (19½")	55 cm (21½")	39 / 47,5 cm (15¼ / 18¾")	22 cm (8½")
Clean 60	52 cm (20½")	56,5 cm (22¼")	112 cm (44")	54,5* cm (21½")	60 cm (23½")	39 / 47,5 cm (15¼ / 18¾")	22 cm (8½")
Clean 24"	69 cm (27¼")	74 cm (29")	107 cm (42")	49,5* cm (19½")	55 cm (21½")	39 / 47,5 cm (15¼ / 18¾")	22 cm (8½")
Clean HRB	54 cm (21¼")	56,5 cm (22¼")	102 / 114,5 cm (40¼ / 45")	42 / 54,5* cm (16½ / 21½")	47,5 / 60 cm (18¾ / 23½")	30 / 44 cm (11¾ / 17½")	22 cm (8½")
Clean 44	7,5 cm (3")	36 cm (14")	44 cm (17¼")	48 cm (19")	43,5 cm (17")	13,5 kg (29,7 lbs)	130 kg (286,6 lbs)
Clean 49	12,5 cm (5")	36 cm (14")	44 cm (17¼")	48 cm (19")	43,5 cm (17")	14,0 kg (30,8 lbs)	130 kg (286,6 lbs)
Clean 55	12,5 cm (5")	36 cm (14")	44 cm (17¼")	48 cm (19")	43,5 cm (17")	14,5 kg (31,9 lbs)	130 kg (286,6 lbs)
Clean 60	12,5 cm (5")	36 cm (14")	44 cm (17¼")	48 cm (19")	43,5 cm (17")	15,0 kg (33 lbs)	130 kg (286,6 lbs)
Clean 24"	12,5 cm (5")	36 cm (14")	44 cm (17¼")	48 cm (19")	43,5 cm (17")	20,0 kg (44 lbs)	130 kg (286,6 lbs)
Clean HRB	12,5 cm (5")	36 cm (14")	44 cm (17¼")	48 cm (19")	43,5 cm (17")	14,2 kg (31,3 lbs)	130 kg (286,6 lbs)

| **sv** *Med Gejder -1,5 cm | **no** *Med bekkenholder -1,5 cm | **da** *Med skinner - 1,5 cm | **en** *With pan holders -1.5 cm (-½")
 | **de** *Mit Beckenhalterung - 1,5 cm | **fi** *Ohjaimien kanssa - 1,5 cm | **fr** *Avec glissières pour bassin - 1,5 cm
 | **nl** *Met toiletemmerhouders -1,5 cm | **it** *Con guide per padella -1,5 cm | **es** *Con guías para cuña - 1,5 cm
 | **pt** *Com suportes de arrastadeira -1,5 cm

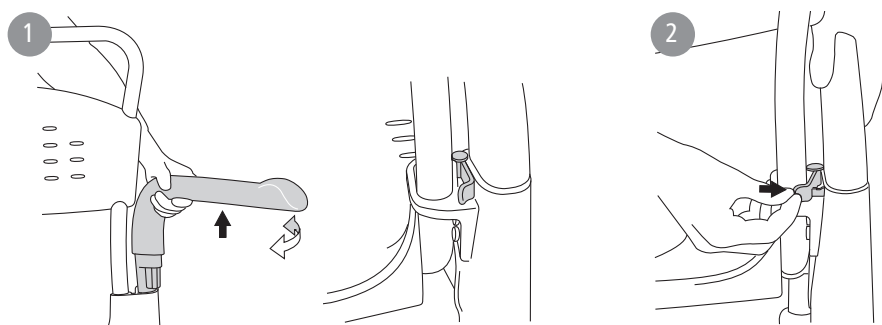
B



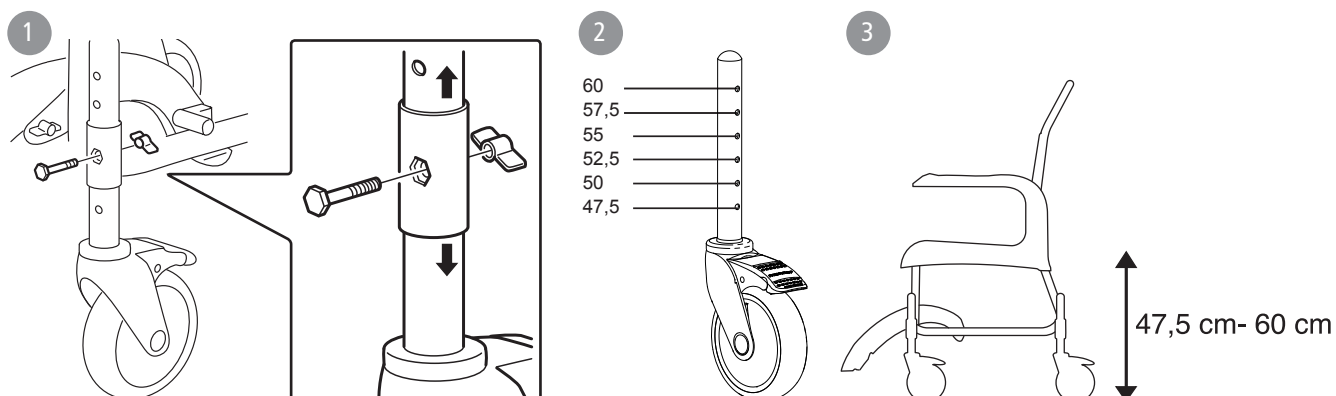
C



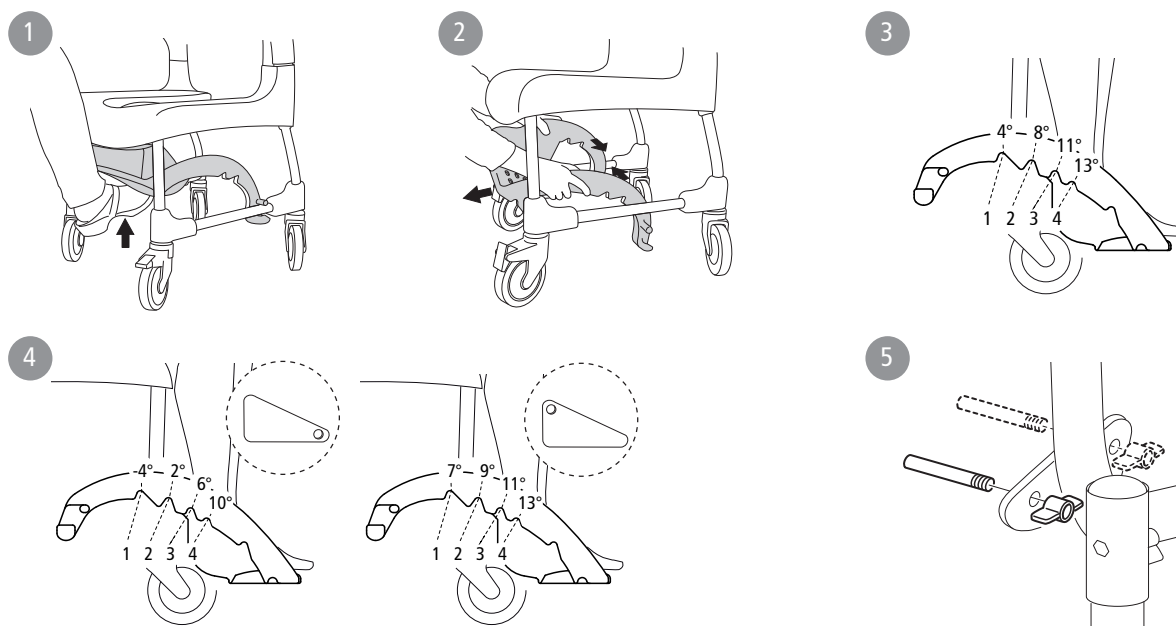
D



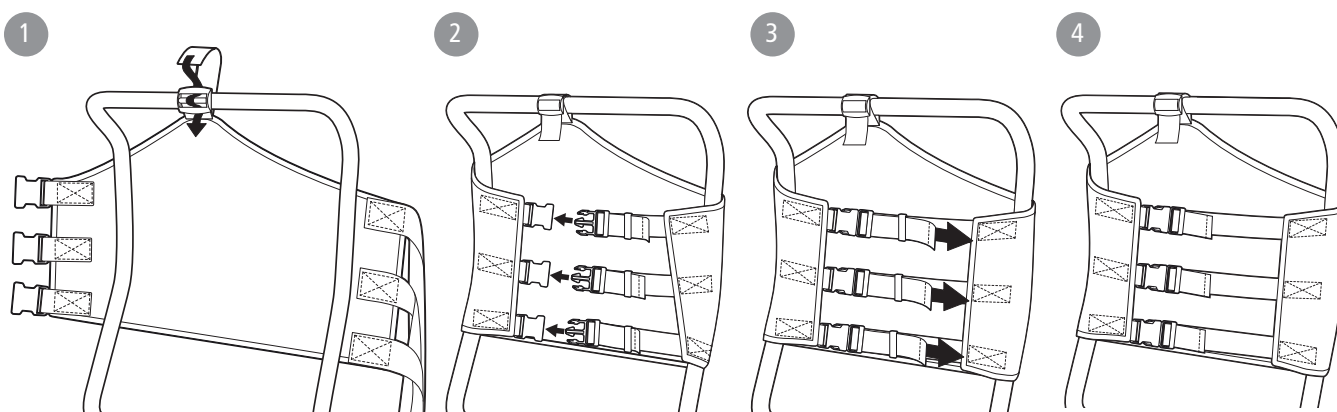
E



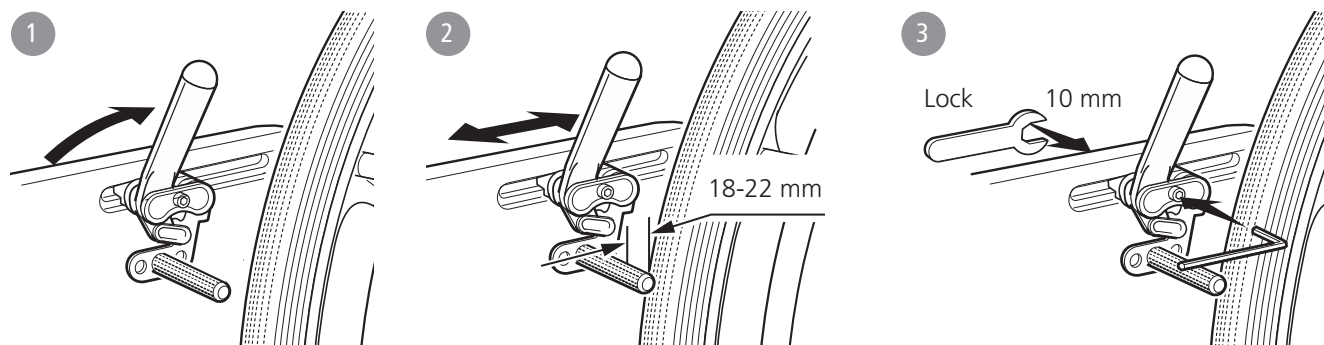
F

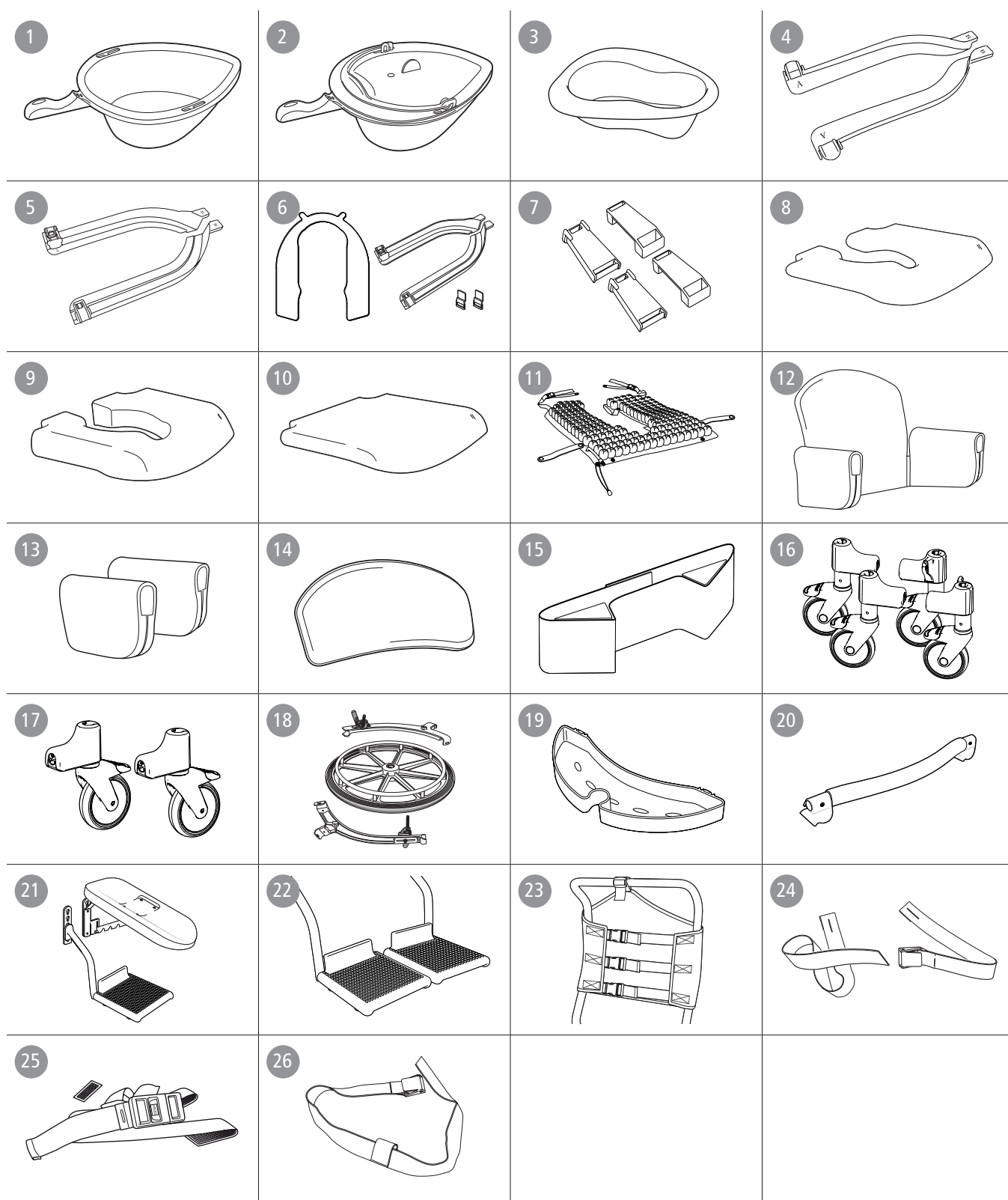


G



H





English

Clean
Clean 24"
Clean HRB

General

Thank you for choosing a shower chair from Etac.

In order to avoid injury during handling and use, please read through this manual first.

In the manual, the user is the person sitting in the chair. The assistant is the person operating the chair.

Clean is a mobile shower and toilet chair intended to make hygiene care easier for people with reduced mobility and their carers. It is designed for use in showers, with hand basins and over toilets, as well as for transport to and from the sanitary room. Every component of the chair is designed to make things easier for users and carers.

Clean can be used by people weighing a maximum of 130 kg.

Clean has been tested by a testing institute and complies with the requirements stated in EN ISO 10993-1 and SS EN 12182.



This product should be recycled as per national regulations.



This symbol appears in the manual along with text. It indicates instances where the safety of the user or the assistant may be at risk.



The images which are referred to on each page are found at the start of the manual (pages 3 to 7). See Figures A to J for the corresponding text.

Item list: ● = Applies to, ○ = Accessories

See the item list on the right which displays the information applicable to each product.

This manual covers the following products:

Clean	●
Clean 24"	●
Clean HRB (Height adjustable)	●

Product description & dimensions table

See Figure A

A1. Backrest **A2.** Armrest **A3.** Seat **A4.** Foot support **A5.** Castor wheel **A6.** Product label (warnings, CE-marking) **A7.** Item no label (serial no, production date)

A8. Rear wheel **A9.** User brake

A10. Height adjustment

Warranty / maintenance

See Figure B

5-year guarantee against material and manufacturing defects. For terms and conditions, see www.etac.com

Product lifetime:

Service life 7 years. For complete information regarding the service life of the product, see www.etac.com.

Maintenance:

To keep the chair in good and safe working order, you should regularly:

- Clean the chair with ordinary non-abrasive detergent. Rinse and dry.
- Keep the castors free of hair and soap deposits, etc.
- If your shower and toilet chair is not in perfect working order, contact your dealer.

Symbols

B1. Clean the chair with ordinary non-abrasive detergent. Rinse and dry.

B2. The product can be cleaned at 85 ° for 3 minutes.



Safety

See Figure B



- Defective chairs must not be used.

Symbols

B3. Do not stand on the footrest, risk of tipping!

B4. Risk of pinching at armrest.

B5. Maximum user weight: 130 kg.

B6. Seating position affects the stability.

Transfers

See Figure C

Over a threshold:

C1. Chair only, push down on the wheel attachment.

C2. With occupant, pull the chair backwards.

In stationary position:

C3. Always lock as many castors as possible when the chair is to be used in a stationary position.

C4. Out-turned castors improve the chair's stability.

Transferring:





Assess the risks and take notes. You as a carer are responsible for the safety of the user. Aids should be used if the transfer is deemed as risky. Visit www.etac.com for manual transfer aids.

C3-C4. It is important to ensure that the castors are locked and pointing outward before carrying out transfers to and from Clean.

- Remove the armrest on the transfer side of the chair.

C5-C7. Carry out the transfer.

English

English			Clean	Clean 24"	Clean HRB
Armrest			See Figure D		
D1. The armrests are swing away and detachable.			●	●	●
D2. The armrests are lockable.					
Height adjustment			See Figure E		
E1-3. The height can be adjusted with ease by placing the screw in the required position.					●
<div> Check that all four castors are similarly adjusted, otherwise stability will be reduced.</div>			<div> Do not use the chair if the wing nuts are loose.</div>		
Footrest			See Figure F		
F1. The carer can easily push in the footrest with their foot.			●	●	●
F2. The footrest is detachable.			●	●	●
F3. The footrest has 4 different angle and height settings.			●	●	
F4. The footrest has 8 different angle and height settings.					●
F5. More adjustment options are available by moving the pin.					
<div> Remove the pins once the footrest has been removed.</div>			<div> When the chair is adjusted to a height of 47.5 cm, the lowest footrest position must not be used.</div>		
Backrest upholstery			See Figure G		
			○	○	○
User brake			See Figure H		
			○	●	
Accessories			See Figure I		
The accessories section shows all the options that are available for your shower chair. Variations from standard can occur in different markets. Limitations in combinations of accessories may occur. For more information visit www.etac.com .					
See Figure I			Clean	Clean 24"	Clean HRB
I1. Pan			○	○	○
I2. Pan and lid with handle			○	○	○
I3. Lid with handle			○	○	○
I4. Disposable pan			○	○	○
I5. Pan holder			○	○	○
I6. Bucket holder			○	○	○
I7. Disposable pan holder			○	○	○
I8. Attachment for low mounting of pan/bucket			○	○	○
I9. Soft seat			○	○	○
I10. Comfort seat			○	○	○
I11. Comfort cushion			○	○	○
I12. One-piece cushion			○	○	○
I13. ROHO protect cushion, pressure-relieving			○	○	○
I14. Comfort padding			○	○	○
See Figure I			Clean	Clean 24"	Clean HRB
I15. Armrest cushion, pair			○	○	○
I16. Soft back			○	○	○
I17. Trunk support			○	○	○
I18. Heightening spacers			○		
I19. Two 75 mm lockable castors			○		
I20. Rear wheel adaptor			○	●	
I21. Soap dish			○		○
I22. Crossbar			○	○	○
I23. Legrest, angle adjustable					○
I24. Foot support, foldable and detachable					○
I25. Backrest upholstery			○	○	○
I26. Safety belt			○	○	○
I27. Positioning belt			○	○	○
I28. Chest harness belt			○	○	○

Etac Sverige AB
Box 203
334 24 Anderstorp
Sweden

Tel 0371-58 73 00
Fax 0371-58 73 90
info@etac.se
www.etac.se

Etac GmbH
Bahnhofstraße 131,
45770 Marl,
Germany

Tel 02365-98710
Fax 02365-986115
info@etac.de
www.etac.de

Etac AB (export)
Box 203
334 24 Anderstorp
Sweden

Tel 46 371-58 73 30
Fax 46 371-58 73 90
info@etac.se
www.etac.com

Etac Holland BV
Fluorietweg 16a,
1812RR Alkmaar,
Nederland

Tel +31 72 547 04 39
Fax +31 72 547 13 05
info.holland@etac.com
www.etac.com

Etac AS
Pb 249,
1501 Moss,
Norway

Tel 815 69 469
Fax 69 27 09 11
hovedkontor.norge@etac.com
www.etac.no

Etac UK Limited
29 Murrell Green Business Park
London Road, Hook, Hampshire
RG27 9GR, United Kingdom

Tel 01256 767 181
Fax 01256 768 887
info@etacuk.com
www.etac.com

Etac A/S
Egeskovvej 12
8700 Horsens
Denmark

Tel 79 68 58 33
Fax 75 68 58 40
info@etac.dk
www.etac.dk

R82 UK Limited.
Unit D4A, Coombswood Business
Park East
Coombswood Way, Halesowen
West Midlands B62 8BH
United Kingdom

Tel 0121 561 2222
Fax 0121 559 5437
enquiries@etac.uk.r82.com
www.etac.com

Snug Seat, Inc.
12801 E. Independence Boulevard
P.O. Box 1739
Matthews, NC 28106, USA

Tel 800 336 7684
Fax 704 882 0751
Information@snugseat.com
www.etac.com



Etac Supply Center AB
Långgatan 12
SE-334 24 Anderstorp



7 320451 372826 >

78548

 etac®