



LM3219 Seat Walkers



Product Codes:

Walker, 150mm Castors, curved backrest, padded seat, security bag, push down brake.

LM3219BM Blue Metallic

LM3219BU Burgundy

WE ARE HERE TO HELP YOU

To request product service and order replacement parts, please call:

Customer Service: 07 3355 8000

Spare Parts: 07 3355 8007

8.30 am to 5.00 pm Monday to Friday

Email: sales@[evocare.com.au](mailto:sales@evocare.com.au)

If the product does not function properly contact [Evocare](#) Australia.

When requesting service, please provide the following information:

1. Part Code and Description
2. Date of Purchase

Address: Evocare Australia Pty Limited
260 South Pine Road, Enoggera, Qld. 4051
P.O. Box 1144, Stafford, Qld. 4053

DESCRIPTION



Specifications:

Four Wheel Aluminium Walker with push down brakes, anatomical hard hand grips, liquid coating, 150mm castors, curved folding padded backrest, security bag.

PUSH DOWN BRAKES.

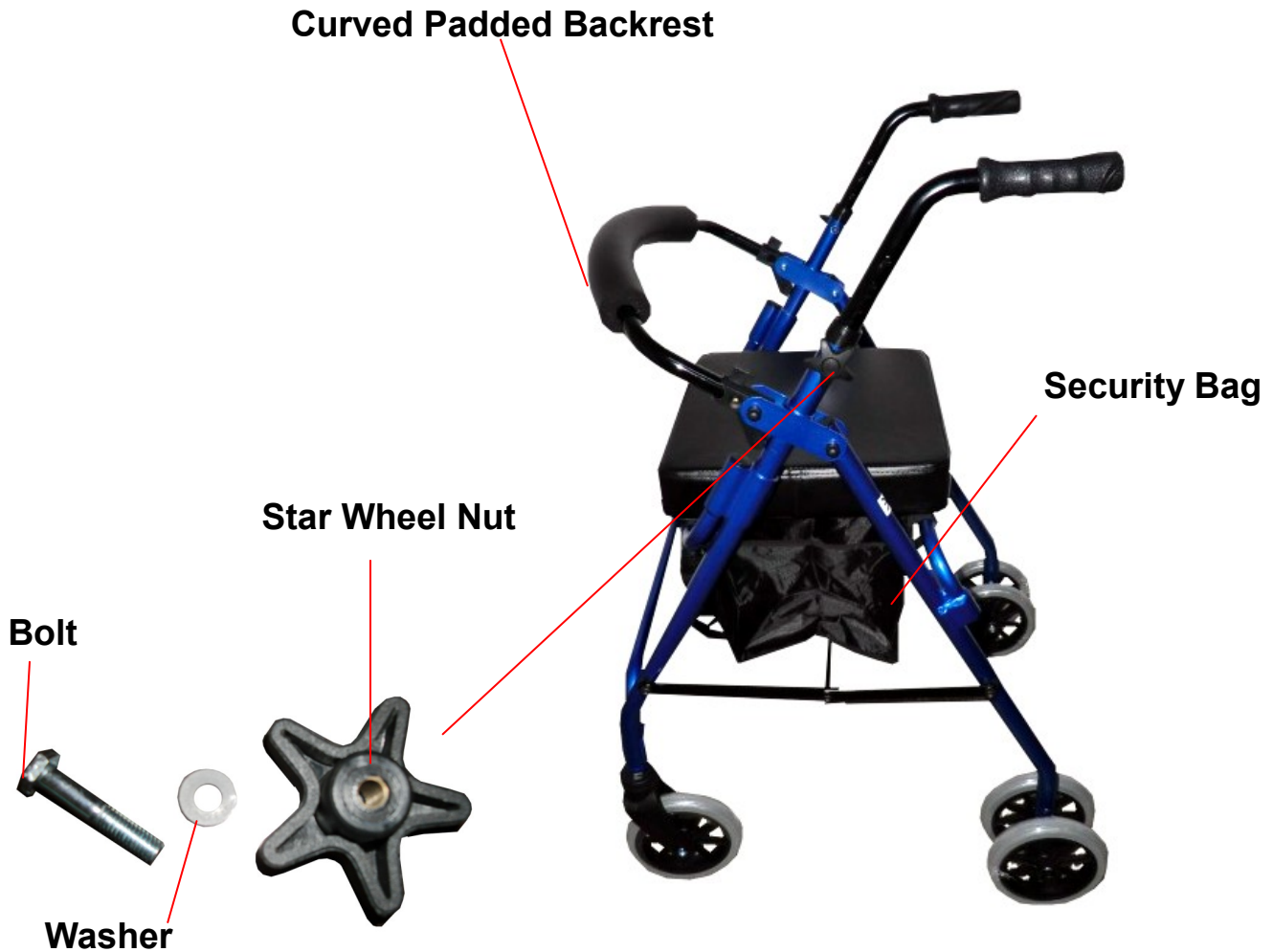
Seat 350 mm x 330 mm x 60mm. Seat Height 590 mm.

Note: Maximum user weight for this product is 120kg

Evocare is a quality endorsed company and supplies equipment listed with the Therapeutic Goods Administration.

The ARTG number for the Walkers is 179500

ASSEMBLY



Measurements for Walker					
Model	Overall Width (mm)	Folded Width (mm)	Between Arms (mm)	Rear Wheel dia. (mm)	Front Wheel dia. (mm)
LM3219	590	270	460	150	150
Model	Seat Height (mm)	Overall Length (mm)	Height to Grips (mm)	Seat Width (mm)	Seat Depth (mm)
LM3219	590	700	815-925	350	330
Model	Backrest Height (mm)	SWL (kg)	Gross Weight (kg)	Net Weight (kg)	
LM3219	250	120	10	7.6	

ASSEMBLY CONT.

Step 1 : Remove all Plastic—Open Walker by spreading the wheels apart and lowering the seat. Remove Star Wheel nut and washers.

Step 2 : Insert handles into the tubes on the sides of the walker.

Step 2.



Step 3.



Step 3 : Align holes of the handle and the tube. Place Bolt through the hole at the desired handle height.

Please ensure the Bolt head fits securely within the frame hole provided.

Step 4 : Place Washer on bolt end then tighten the Star Wheel nut on. To get required height: Stand in front of walker with arms by your side, the handgrips should be level with your wrist.

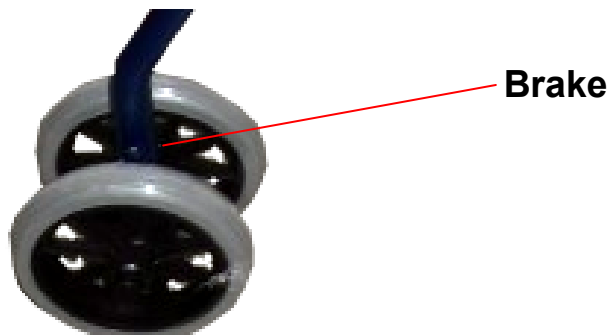
Step 4.



ASSEMBLY CONT.



Step 5: Place the padded backrest into the brackets on the frame at the rear of the seat. Press buttons and click into place.



To operate brakes on walker: push down on the handgrips. When sitting on your walker the brakes are automatically applied. Once you have stood up, the brakes are released.

SAFETY

Safety and handling of the seat walker requires the close attention of the user. This manual points out the most common procedures and techniques involved in the safe operation and maintenance of the seat walker. It is important to practice and master these safe techniques until you are comfortable in manoeuvring around frequently encountered architectural barriers.

Use this information only as a basic guide. The techniques that are discussed below have been used successfully by many. Individual seat walker users often develop skills to deal with daily living activities that may differ from those described here. All warnings and cautions given in this manual **MUST** be followed.

Techniques in this manual are a starting point for the new seat walker user with safety as the most important consideration for all.

To determine and establish your particular safety limits, practice bending, reaching and sitting in several combinations in the presence of a qualified health professional before attempting active use of the seat walker.

When unfolding your seat walker for use make sure it is fixed safely by pushing down on the folding brackets between the front and rear frame.

Also ensure that the backrest has been pushed back to its locked position.

When assembling your seat walker, make sure that bolts and tightening wheel are secure **BEFORE** use.

Always check hand grips for looseness before using seat walker. If loose and/or worn, replace immediately.

If seat walker is exposed to extreme temperature (above 38° C or below 0° C), high humidity and/or becomes wet, prior to use, ensure hand grips **DO NOT** twist on the seat walker handle—otherwise damage or injury may occur.

When seated **DO NOT** attempt to reach for objects if you have to move forward on the seat or if you have to pick them up from the floor by reaching between your knees. **DO NOT** reach over the backrest to reach objects behind you as this may cause the seat walker to tip over.

DO NOT use on roads, streets or highways.

DO NOT climb, go up or down an incline or traverse slopes greater than 9 degrees.

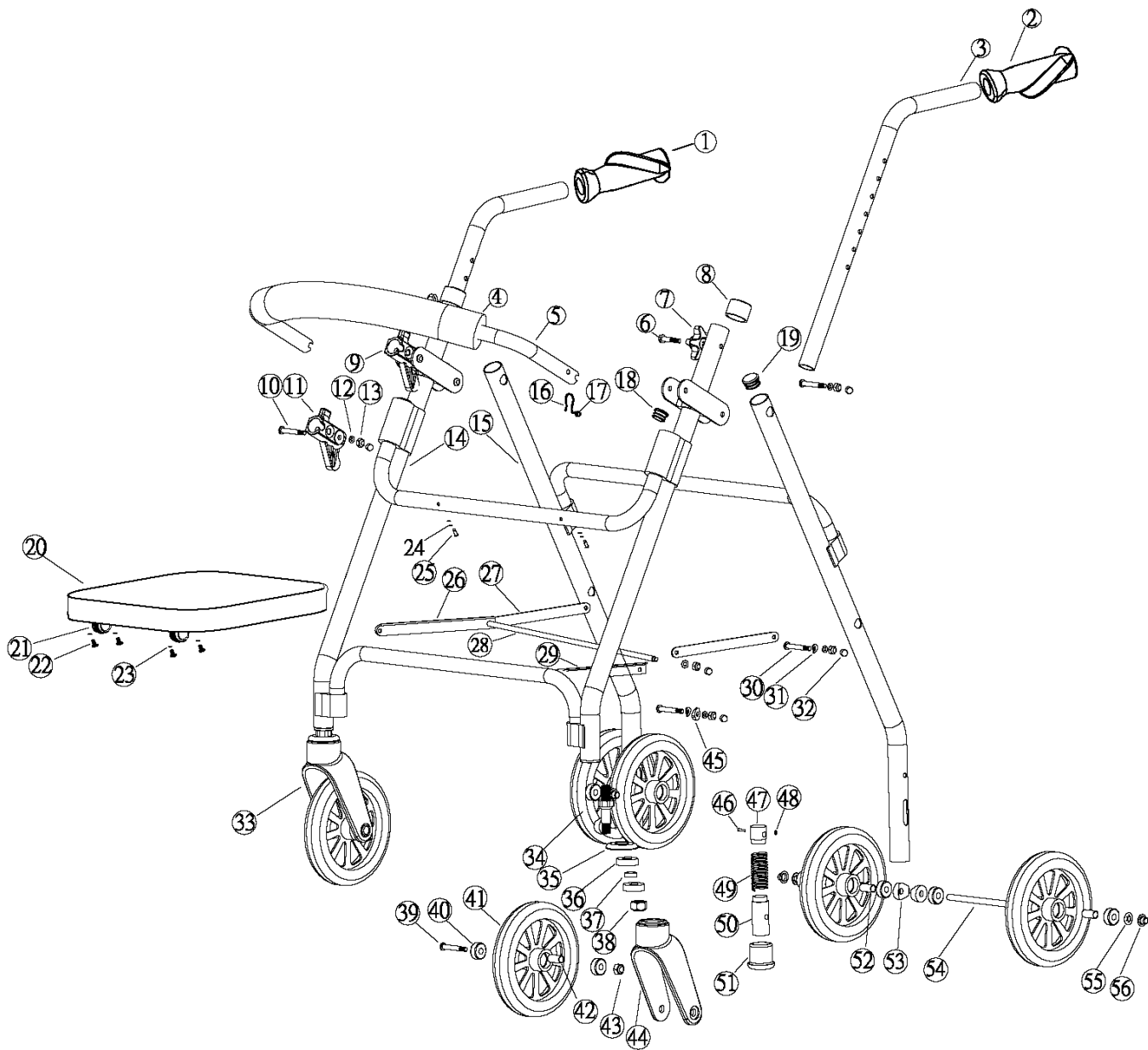
DO NOT attempt to go up or down an incline which has a film of water, ice or oil.

Use caution when traversing curbs or obstacles as this may cause the seat walker to tip over and cause bodily harm or damage to the seat walker.

The seat walker is not a wheelchair. People must not be pushed while seated on the walker—otherwise damage or injury may occur and it will also void the warranty.

The tyres and wheels need to be checked periodically for cracks and wear. If problems are indicated they should be replaced immediately.

PART LIST



LM3219 Four Wheel Aluminium Walker with push down brakes

PART LIST

LM3219 Four Wheel Aluminium Walker with push down brakes

LineNo	Part number	Part Description	LineNo	Part number	Part Description
1	K02LA802		29	S01LA803	
2	K01LA802		30	C0009B04	
3	B01LA604		31	K0002B04	
4	W01LA802		32	U01LA803	
5	C01LA808		33	L02LA601	
6	Y01LA802		34	U01LA803	
7	B01LA802		35	M01LA601	
8	A01LA802		36	D0002C01	
9	U02LA808		37	X02LA803	
10	C01LA809		38	Z02LA802	
11	U01LA808		39	C01LA609	
12	J0004B04		40	D0003C01	
13	Z0002B04		41	Z01LA609	
14	Q001LA604		42	X01LA609	
15	Q004LA604		43	Z01LA802	
16	D0002E01		44	L01LA601	
17	L01LA809		45	H01LA601	
18	G01CS008		46	H0006B05	
19	G01LA802		47	A01LA604	
20	G01LA601		48	J0002B01	
21	E01LA802		49	Y01LA604	
22	G0004A01		50	A02LA604	
23	F01LA802		51	Z01LA609	
24	J0006B04		52	X02LA609	
25	M02LA802		53	H02LA601	
26	S02LA803E01		54	P01LA604	
27	RAEABR01		55	J01FS035	
28	Q01LA802		56	T01FS035	

CLEANING & MAINTENANCE

Regular cleaning and inspection is recommended.

Ensure the walking frame is kept clean.

Wipe down the walking frame with a damp cloth on a regular basis.

The tyres and wheels need to be checked periodically for cracks and wear. If problems are indicated they should be replaced immediately.

WARRANTY

1. Evocare provides consumers with the following warranty in relation to this Product, in addition to complying with the requirements of any relevant legislation, including the *Competition and Consumer Act 2010* (Cth) in Australia and the *Consumer Guarantees Act 1993* in New Zealand (the Acts), except where a New Zealand consumer acquires the Product for the purposes of a business.
2. In this warranty, we have used the following definitions:
 - (a) **Form** means a warranty claim form issued by Evocare in respect of Products;
 - (b) **Evocare or our** means Evocare Australia Pty Limited, ABN 98 078 566 604 of Level 19, 144 Edward Street, Brisbane 4000;
 - (c) **Products** means the goods manufactured for Evocare (including products manufactured by its contract manufacturers);
 - (d) **Material** means a material or component used by Evocare in the manufacture of the Products;
 - (e) **Retailer** means the authorised dealer of Products from whom the Product was purchased;
 - (f) **Warranty Period** means the warranty period commencing from the date of purchase of the relevant Product. If the Product or part (as the case may be) is repaired or replaced, there will be no extension to the original warranty period; and
 - (g) **Workmanship** means the handling, assembly and manufacturing processes performed by or on behalf of Evocare in order to manufacture the Products.
3. Evocare warrants that for the duration of the Warranty Period, all Products will be free of faults arising from defects in Workmanship or Materials, on the terms and conditions set out in this warranty.
4. Evocare undertakes that if during the Warranty Period any Product, or any part of a Product, has failed to operate correctly due to faulty Workmanship or defective Material, it will repair or replace the Product or part (as the case may be) free of charge provided that the following procedures are met :
 - (a) The consumer must contact the Retailer or Evocare upon becoming aware of any defect to a Product upon which the consumer will be required to complete a Form and provide satisfactory proof of purchase.
 - (b) Evocare will review the Form to determine whether there is a defect, and if so Evocare agrees to (at its option) repair, replace or supply equivalent goods, or pay the cost of any of those remedies to the consumer.
 - (c) If Evocare requests the return of the applicable Product or part, the consumer will be responsible for the collection and freight costs of returning that Product or part to Evocare.
 - (d) The consumer acknowledges that it is also responsible for the freight costs to deliver any new Product or replacement part to it.
5. This warranty is in addition to any non-excludable legal rights or remedies conferred on the consumer under any applicable Act and any similar laws. To the extent permitted by law, Evocare's liability for any non-excludable condition or warranty is limited to rectifying any defect at its option, as set out in paragraph 4(b).
6. Subject to the requirements of any applicable Act or legislation and to the extent permitted by law, no liability (whether expressed or implied) of any nature whatsoever, is accepted by Evocare for any consequential loss, damage or injury arising as a result of any fault in the Products.
7. This warranty does not extend to damage to Products which occurs during transit or transportation, or which is caused by any abuse, accident or improper installation, connection, use, adjustment or repair or use of goods otherwise than in accordance with instructions issued by Evocare.
8. The warranty on Products is waived if any addition or attachment to the Products do not have Evocare's approval or are not sold as Evocare products. The Products are designed to perform specific tasks under established test loads and unauthorised attachments may produce stresses for which the design is not appropriate.
9. The following applies to consumers who purchased a relevant Product in Australia:

Our goods come with guarantees that cannot be excluded under the Australian Consumer Law. You are entitled to a replacement or refund for a major failure and compensation for any other reasonably foreseeable loss or damage. You are also entitled to have the goods repaired or replaced if the goods fail to be of acceptable quality and the failure does not amount to a major failure.

WARRANTY

Your Evocare Walker is warranted to be free of defects in material and workmanship for 12 months, for the original consumer.

NOTE: This warranty does not cover device failure due to owner misuse, negligence, or normal wear and tear.

The warranty does not extend to non-durable components such as rubber accessories, brakes and grips, which are subject to normal wear and tear. Non-durable components are warranted for 3 months.

For more information about your LM3219 seat walkers, warranty or to order parts call 07 3355 8007.

E- mail: sales@evocare.com.au
Website www.evocare.com.au

Manufactured for:

Evocare Australia Pty Limited, 260 South Pine Road, Enoggera. QLD. 4051.

Phone: 07 3355 8000

FAX: 07 3355 5043