

EVOCARE CONTACT:

Sales: 07 3355 8000

Fax: 07 3355 5043

Email: sales@evocare.com.au

PO Box 1144, Stafford

Q 4053 Australia

Pressure Relieving Mattress

Call or email for more information



Pressure injuries are a frequent and preventable cause of harm for hospital patients, aged care residents, or home care clients. They are financially and emotionally costly to facilities, staff and patients. Pressure injuries are caused by unrelieved pressure, friction or shear forces on any part of the body. They can develop quickly, can cause significant pain, can become infected, and can impact on quality of life. Pressure injuries can take weeks, months or even years to heal and at least 80% are preventable through early intervention.

Mattress Foam Layers

Position	Type
Top	Visco-flex, a visco-elastic foam for a pressure relieving top layer
Middle	Hospital Grade (HG) foam as a comfort layer, 1 or 2 layers
Bottom	Hospital Grade (HG) foams as a comfort layer, (more dense)
Side	Stamina® foam for edge support (still more dense)

Foams

Visco-flex is a visco-elastic foam (apparent density of 15 to 100 kg/m³) which provides very slow recovery cushioning for even pressure distribution and supreme comfort. It provides ideal comfort without full reliance on body heat to soften the foam. Visco-flex has a very low resilience level that cradles the natural contours in your neck, shoulder, back and knees giving you a sense of weightlessness.

Hospital Grade foams are high-density (apparent density of 20 to 40 kg/m³) conventional type foams that are flame retarded. These foams are specifically developed for the use in health care mattresses. They are manufactured with Ultra-Fresh® anti-microbial protection for a healthier environment.

Stamina® is a range of high quality foams with densities from 29 kg/m³ to 35kg/m³ that provides lasting comfort and support even after years of use.

Mattress foams are treated to control Bacteria, Mould, Mildew & Dust Mites



Mattress Warranty—2 Years cover—5 Years foam



Our catalogue is our comprehensive and up to date website: <http://www.evocare.com.au/>

Specialist Equipment Sales & Service

EVO CARE CONTACT:

Sales: 07 3355 8000

Fax: 07 3355 5043

Email: sales@evocare.com.au

PO Box 1144, Stafford

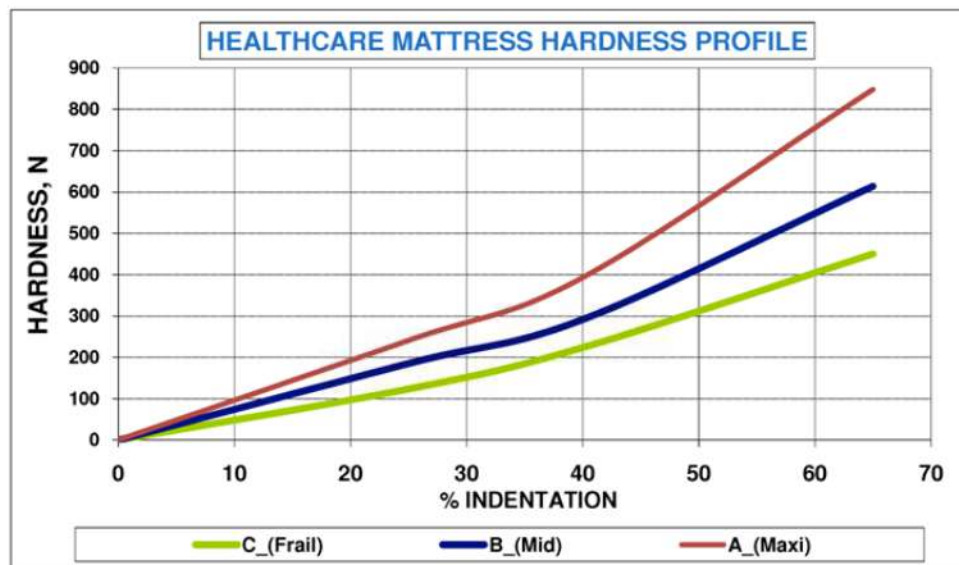
Q 4053 Australia

4 Pressure Relieving Mattress

Call or email for more information

4 Pressure Relieving Mattresses for different users.

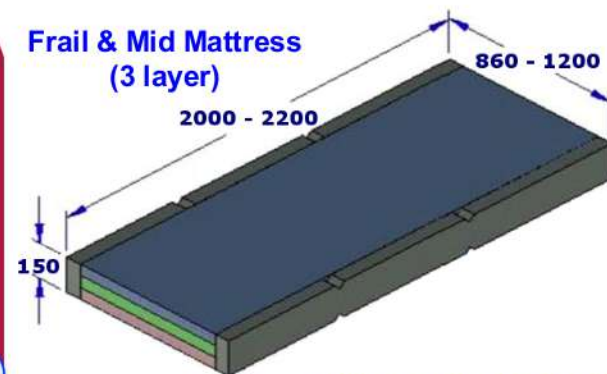
One for the frail user, (Frail, EV9712)—One for the average user (Mid, EV9711)—One for the heavy user (Maxi, EV9713) - One Concave. Specially selected grades of foam in three layers (four for Maxi) create a mattress suitable for the type of user and give a good balance between weight (% indentation) and firmness (hardness).



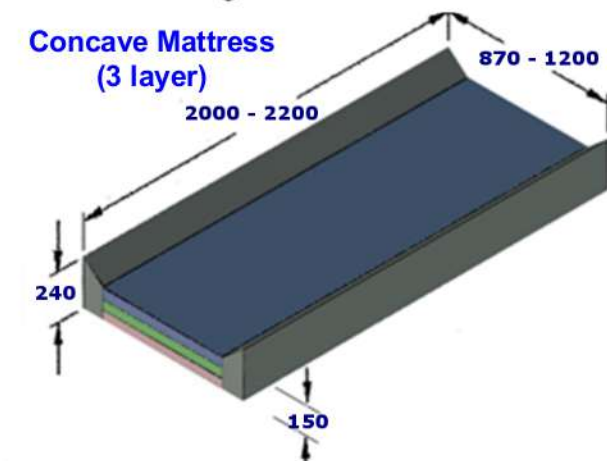
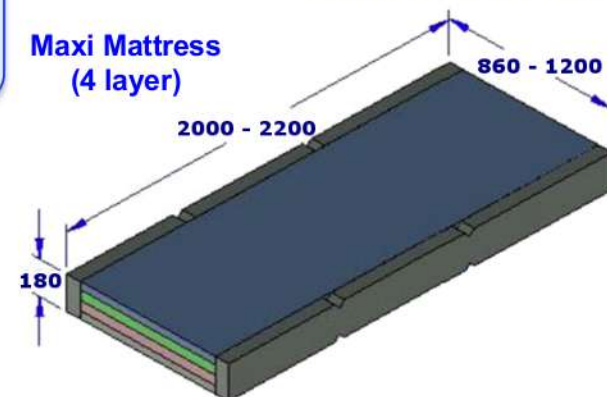
The Cover

The flexible polyurethane coated fabric gives high waterproof capability with breathability. The multi-stretch capability of the fabric has obvious benefits for pressure care, the reduction of bed sores and a decrease of skin shear.

The fully enclosed mattress, with its waterproof, yet vapour permeable, multi-stretch, bacterio-static and fungo-static polyurethane cover, is easy to clean and disinfect ensuring maximum hygiene for patients and caregivers.



Mattress Weight 10kg



 **Evocare**

Our catalogue is our comprehensive and up to date website: <http://www.evocare.com.au/>

Specialist Equipment Sales & Service

EVO CARE CONTACT:

Sales: 07 3355 8000

Fax: 07 3355 5043

Email: sales@evocare.com.au

PO Box 1144, Stafford

Q 4053 Australia

4 Pressure Relieving Mattress

Call or email for more information**4 Pressure Relieving Mattresses** for different users.

One for the frail user, (**Frail, EV9712**)—One for the average user (**Mid, EV9711**)—One for the heavy user (**Maxi, EV9713**) - One Concave. Specially selected grades of foam in three layers (four for Maxi) create a mattress suitable for the type of user and give a good balance between weight (% indentation) and firmness (hardness).

Product codes for mattresses (mm)

Frail – up to— 100kg	Mid – up to— 150kg	Maxi – up to— 190kg	
EV9712 (2030 x 900 x 150)	EV9711 (2030 x 900 x 150)	EV9713 (2030 x 900 x 180)	
EV9722 (2000 x 900 x 150)	EV9721 (2000 x 900 x 150)	EV9723 (2000 x 900 x 180)	
	EV9724 (2200 x 900 x 150)	EV9726 (2200 x 900 x 180)	
EV9732 (2000 x 1000 x 150)	EV9731 (2000 x 1000 x 150)	EV9733 (2000 x 1000 x 180)	
	EV9734 (2200 x 1000 x 150)	EV9736 (2200 x 1000 x 180)	
	EV9742 (2200 x 1200 x 150)		
EV9S22 (2000 x 900 x 150)	EV9S21 (2000 x 900 x 150)	EV9S23 (2000 x 900 x 180)	
EV9S32 (2000 x 1000 x 150)	EV9S31 (2000 x 1000 x 150)	EV9S33 (2000 x 1000 x 180)	
#76 Carrflex Bravo Cover	Maxi – up to— 190kg EV9743 (2000 x 1200 x 180)	Maxi – up to— 190kg EV9744 (2200 x 1200 x 180)	Maxi – up to— 360kg EV9746 (2000 x 1200 x 200, for Gigant)



Our catalogue is our comprehensive and up to date website: <http://www.evocare.com.au/>

Specialist Equipment Sales & Service

EVOCARE CONTACT:

Sales: 07 3355 8000

Fax: 07 3355 5043

Email: sales@evocare.com.au

PO Box 1144, Stafford

Q 4053 Australia

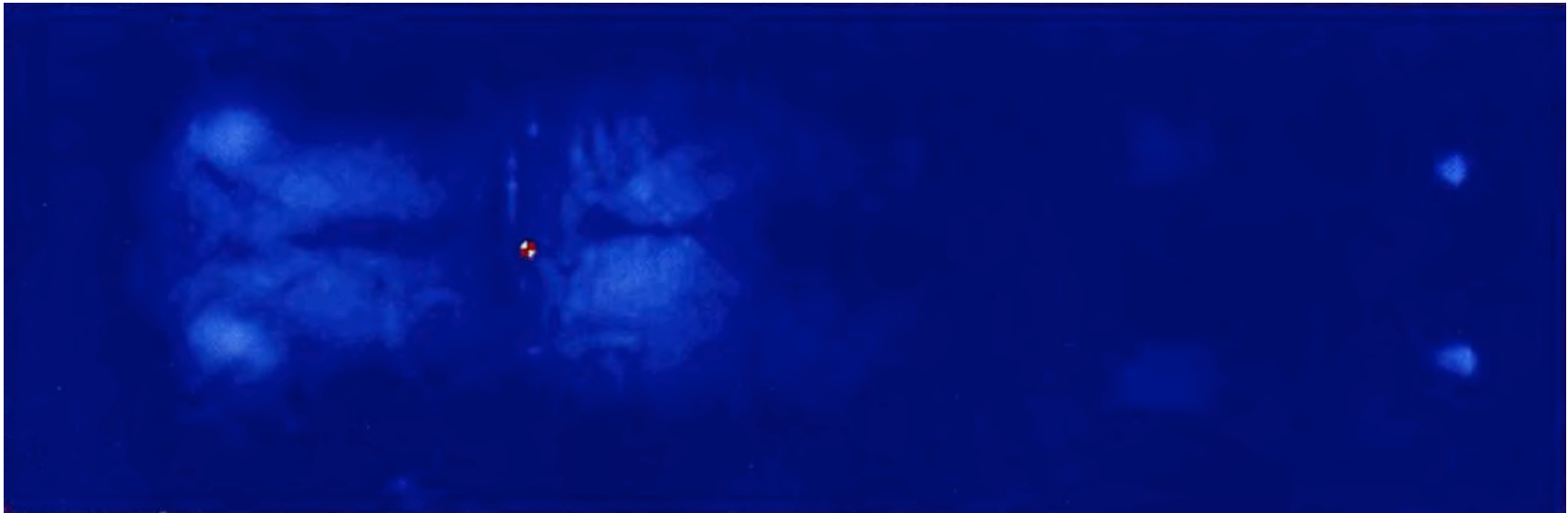
Pressure Mapping (Frail)

Call or email for more information



Pressure Mapping is a valuable tool in the evaluation of the support and comfort level of a person on a particular surface. It may be used as part of assessing the suitability of mattress designs, for intended purpose.

The Xsensor® Pressure Mapping System measures the interface pressure between a body and the surface on which it is lying, using a measuring sheet comprised of many individual measurement points. A computer-generated pictorial representation reveals how the surface being tested conforms to the body, the location of pressure points between the surface and the body, and the relative degree of severity of such pressure points.



The pressure map is for a **100kg male subject** lying on their back on the Pressure Relieving Mattress designed for Frail users (for users up to 100kg). The map shows the % peak pressure under 50mmHg was 100% and when lying on their side was 99%.



Our catalogue is our comprehensive and up to date website: <http://www.evocare.com.au/>

Specialist Equipment Sales & Service

EVO CARE CONTACT:

Sales: 07 3355 8000

Fax: 07 3355 5043

Email: sales@evocare.com.au

PO Box 1144, Stafford

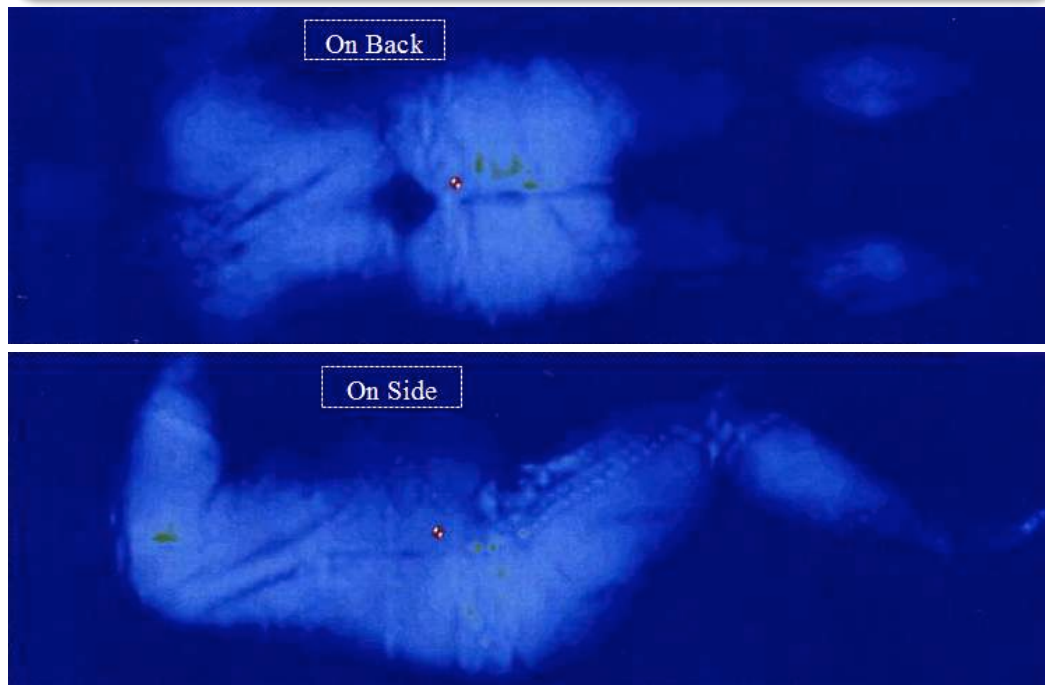
Q 4053 Australia

Pressure Mapping (Mid)

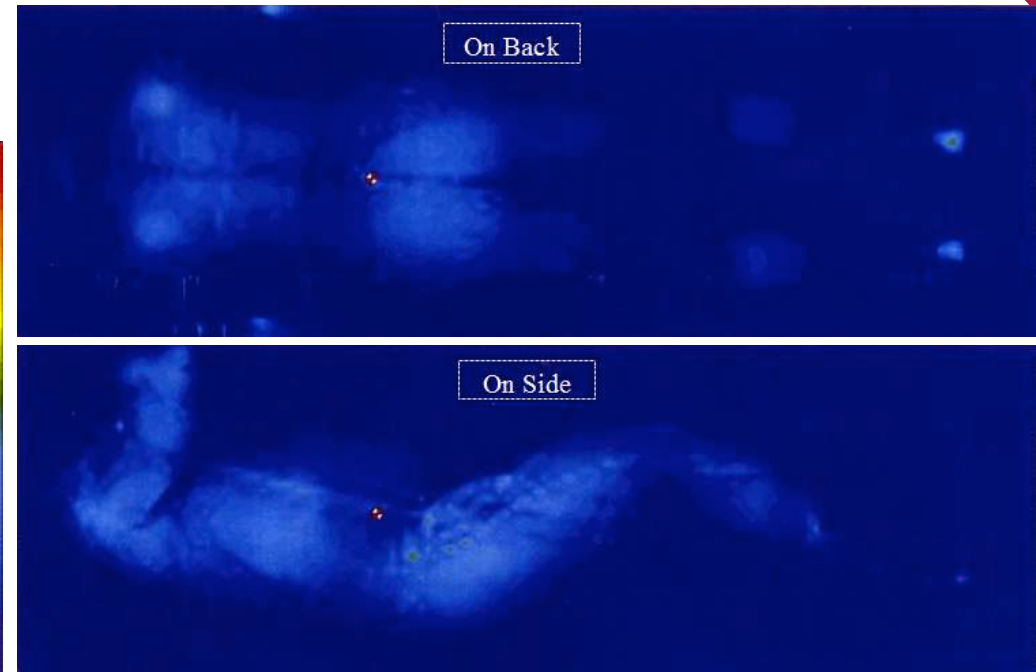
Call or email for more information



Pressure Mapping is a valuable tool in the evaluation of the support and comfort level of a person on a particular surface. It may be used as part of assessing the suitability of mattress designs, for intended purpose.



The pressure map is for a **138kg male subject** lying on their back and on their side on the Pressure Relieving Mattress designed for Average users (for users up to 150kg). The map shows the % peak pressure under 50mmHg was 99.3% and when lying on their side was 99.4%.



The pressure map is for a **100kg male subject** lying on their back and on their side on the Pressure Relieving Mattress designed for Average users (for users up to 150kg). The map shows the % peak pressure under 50mmHg was 99.9% and when lying on their side was 99.8%.



Our catalogue is our comprehensive and up to date website: <http://www.evocare.com.au/>

Specialist Equipment Sales & Service

EVO CARE CONTACT:

Sales: 07 3355 8000

Fax: 07 3355 5043

Email: sales@evocare.com.au

PO Box 1144, Stafford

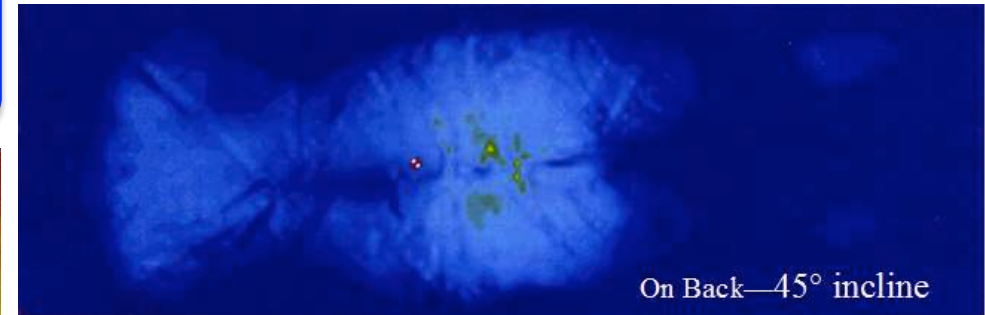
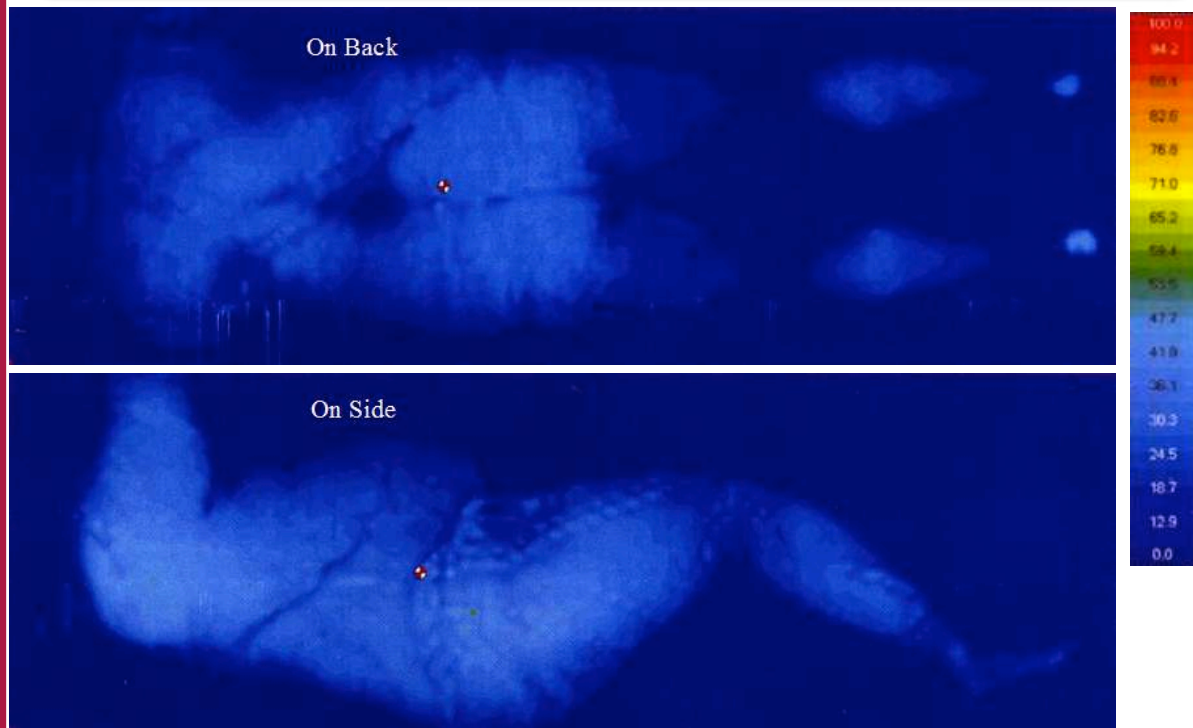
Q 4053 Australia

Pressure Mapping (Maxi)

Call or email for more information



Pressure Mapping is a valuable tool in the evaluation of the support and comfort level of a person on a particular surface. It may be used as part of assessing the suitability of mattress designs, for intended purpose.



Even with the backrest inclined at 45° the pressure map for a **138kg male subject** lying on their back on the Pressure Relieving Mattress designed for Heavy users (for users up to 190kg) shows the % peak pressure under 50mmHg was 97.3%.

Interface measurements alone should not be used in making decisions about pressure distribution for individual subjects. Results may vary from subject to subject and will depend on the type of measuring device used. The results may be used for comparison only and are not considered absolute measurements

The pressure map is for a **138kg male subject** lying on their back and on their side on the Pressure Relieving Mattress designed for Heavy users (for users up to 190kg). The map shows the % peak pressure under 50mmHg was 99.9% and when lying on their side was 99.6%.



Our catalogue is our comprehensive and up to date website: <http://www.evocare.com.au/>

Specialist Equipment Sales & Service