

# Turner PRO

Reconditioning



RE61099 rev C 2019-15-10



Reconditioning

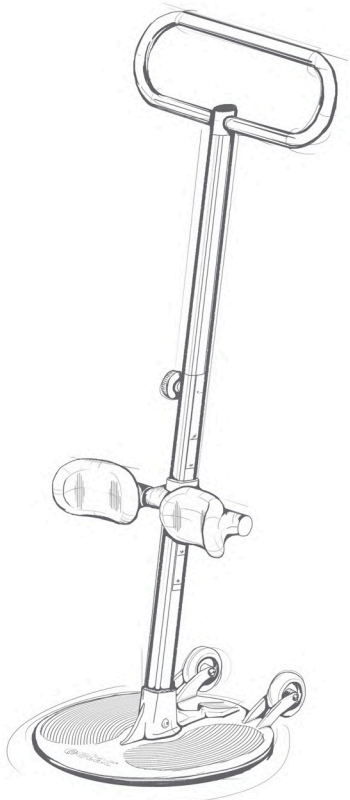


# Turner PRO

## Reconditioning

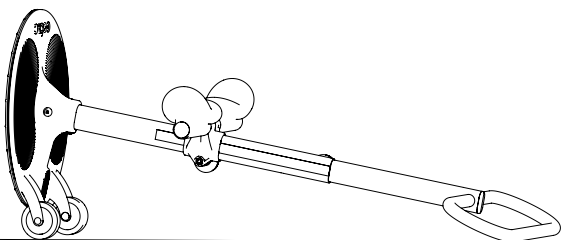
etac®

EN



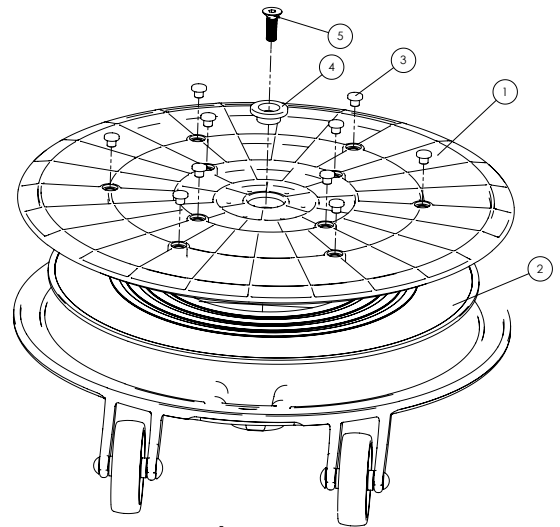
### 1 Washing

- Use a solvent-free detergent with a pH level between 5 and 9.
- Can be washed at 70° C for 10 minutes.



- Lay the Turner PRO on the floor in an angled position after washing, so the water runs out of the rotating mechanism.
- You may also use compressed air to blow dry inside rotating mechanism.

### 2 Rotating mechanism



#### If turner rotates poorly:

- Unscrew bolt (5).
- Clean Low friction disc (2) and floor plate (1).
- If deep grooves or damages in (1) or (2), replace (1,2,3,4,5).
- Apply loctite 243 or similar on bolt (5), tighten bolt firmly (approx 20Nm).

#### If antislip knobs are missing:

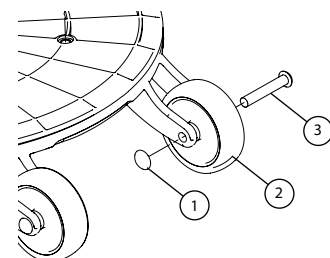
- Clean holes.
- Apply Loctite 460 and push in new knobs.

### 3 Wheels / Wheel axles

- Controls wheel and shaft for wear.
- Check if the wheels turn easily, remove hair and dirt.

#### If wheels are worn out, or still rotates poorly after cleaning:

- Flip out starlock with an screwdriver or similar (1).
- Remove bolt and wheel.
- Replace 1,2,3.
- Place wheel between forks.
- Insert bolt and knock .starlock in place.



# Turner PRO

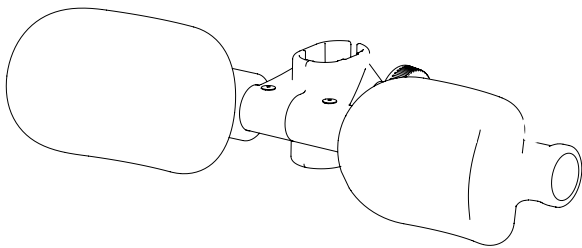
## Reconditioning

etac®

EN

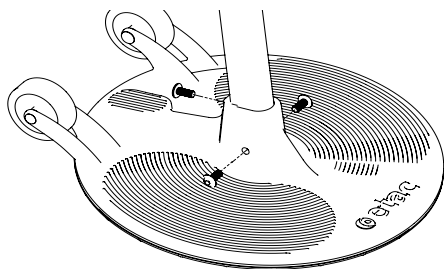
### 4 Leg Support

- Check bracket on leg support for cracks and wear. If cracks, replace complete leg support.
- Check cushion for wear, should be tight and firm around the pipe. If loose or damaged, replace complete leg support.

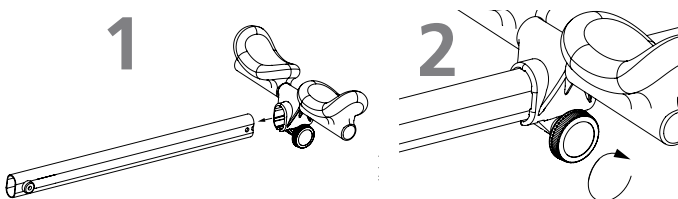


#### If complete leg support needs to be replaced:

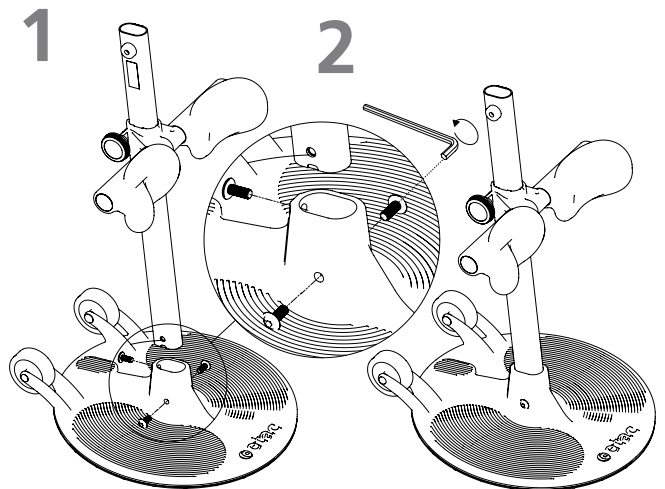
- Unscrew bolts and remove outer pole.
- Pull leg support out of pole.



- Insert leg support with kneepads pointing upwards
- Make sure both knobs are on the same side (1).
- Tighten knob by turning knob clockwise (2).



- Place the base plate on an even surface. Insert pole with knee pads facing away from the wheels.(1)
- Insert all three screws into holes in the base plate. Use allen key to screw in bolts. Apply loctite 243 or similar on bolts, tighten bolt firmly, (approx 20Nm). (2)



### 5 Main plate/outer pole

- Check for cracks and wear on main plate and outer pole. If cracks, replace complete Turner-PRO.
- Check bolted connection between pole and main plate (3 bolts), if loose bolts tighten all bolts.

### 6 Handle/inner pole

- Check for cracks and dents, if cracks or dents replace inner pole.

Original spare parts from Etac should always be used.

Queensland Distributor

## **EVOCARE AUSTRALIA PTY LIMITED**

A.B.N. 98 078 566 604

Trading as **EVOCARE** and **L&M EQUIPMENT**

P.O. Box 1144, Stafford Qld. 4053

Ph: 07 3355 8000 Fax: 07 3355 5043

Website: <http://www.evocare.com.au>

Email: [sales@evocare.com.au](mailto:sales@evocare.com.au)

[workshop@evocare.com.au](mailto:workshop@evocare.com.au)

[warehouse@evocare.com.au](mailto:warehouse@evocare.com.au)

[accounts@evocare.com.au](mailto:accounts@evocare.com.au)



Etac AS  
Etac Supply Gjøvik  
Hadelandsveien 2, 2816 Gjøvik, Norway  
Tel +47 4000 1004  
[molift@etac.com](mailto:molift@etac.com) [www.etac.com](http://www.etac.com)

# **etac**®